



Queen For Nine Days: A Grey Tudor Lady in Need Of Restoration? p9.

Are You Going To Scarborough Fair?

Maybe not just yet but here are some other outings you might well consider this October.

- Pallant Gallery Open Weekend happening this month! **Date for the diary! p5.**
- Trundle around the Trundle with history as your guide. **p6.**
- Try Chichester Cross Market on Sunday 16th; **p5.**
- Or Pumpkins Galore at Bignor; **p5.**
- How about the British Legion Poppy Lunch hog roast? **Tickets available now. p3.**

Parsley, Sage, Rosemary and Thyme.

- Just some of the local produce you could find at the Chichester Farmers Market.
– **dates for the diary! p4**
- Harvest wisely with Matthew.
His gardening tips are on p7
- Time to think about Spring bulbs?
Planting tips on p8
- Spice up your food ideas with Louise.
Autumn winning recipes on p11

Remember Me To One Who Lives There.

- **Mundham & District Gala;**
Find out how this year Gala went and get together to plan for next years. **Date for your diary, p3**
- **Reflections on a Pagham sunrise.**
Poetry/images: **p10.**
- **Help the MWHG care for our natural heritage.**
Join In–Cake included! **Activities/dates on p4.**
- **Quiet lanes could be a thing of the past.**
Don't let it happen. **Parish Council Matters; p2**

She Once Was a True Love Of Mine.

- **Helena's quiz recalls the great stage shows.**
Reminisce on **p10**
- **The Royal Story of Lady Jane Grey.**
A portrait restored movingly recalls her brief life. **p9**
- **The French Exchange.**
Their Wine & Cheese Evening will create good impressions. **Date for your diary. p8**

Our Usuals.

- Crossword. **p7/12**



NORTH MUNDHAM PARISH COUNCIL

Working for the whole community

North Mundham Parish Council Report

A couple of weeks ago the Parish Clerk and I had a useful meeting with Jason Lemm, our Police Community Support Officer (PCSO) – some of you may have met him at the Gala in July. We were able to discuss a number of matters of mutual interest. Jason emphasised that he wants to meet as many local people as possible, but we must remember he is only one of three PCSOs covering the whole of South Chichester, and he cannot be on shift all the time. He will try to make a point of coming to events such as meetings of the Parish Council, the Meeting of Electors and the Senior Citizens' Christmas Lunch, when he can plan visits into his shift pattern. But because he is not always there it is important that, if you want to report a crime, you use the established routes – call 999 if it is an emergency or a crime in progress, and use the 101 service for other reports. If you have Jason's contact details and tell him about it, it may be some time before he picks up the message.

One specific issue residents asked us to discuss was the problem of tractors being driven with heavy loads, too fast and with insufficient care, though the same principles apply to other vehicles too. This is something the police can only help with if we can identify the offenders, so it is essential to record the registration number of the vehicle. We were advised that using the 'Crackdown' reporting system is very effective, since it is able to identify repeat offenders, and the police have a system of graduated response to follow up reports.

In other parishes there has been considerable success in setting up 'Speedwatch' groups to try to control speeding. At the moment we do not have a group in the Parish, but Jason would like to meet anyone interested in forming a group – it would need at least four people to get started. If there is anyone interested, please let me know.

It is probably not too early to remind you that the local elections are coming up on 4 May next year. It is likely that one or two of your parish councillors will choose not to stand for re-election, and so we may have vacancies to fill. If there is anyone who is interested in standing for election, and would like to find out a bit more about what is involved in being a councillor, please feel free to contact me. Any discussions will be entirely in confidence unless you choose otherwise.

Tim Russell, Chairman. 01243 781052. t.russell@northmundham.org

The current Parish Council Newsletters can be found by clicking here. [PC Newsletters.](#)

Councillors.

A list of your Parish Councillors can be found here:

[Parish Councillors | North Mundham Parish Council](#)

The Parish Council meetings schedule is here:

[Schedule of Meetings | North Mundham Parish Council](#) .

Links to local walks in the parish can be found on:

[Footpaths and Bridleways in and around the Parish | North Mundham Parish Council](#)

Some useful emergency contact details are :-

- For planning issues, the Planning Authority is Chichester District Council. Their general contact number is [01243 785166](tel:01243785166). For contact out of hours call [01243 785339](tel:01243785339).
- For planning use [01243 534734](tel:01243534734).
- For reporting all sorts of footpath or road defects, you can also use Love West Sussex at:
[Love West Sussex - Love Where You Live](#)
- But for street lights of any kind, including traffic lights and illuminated bollards, click on:
[West Sussex Street Lighting Services | Report a fault with an item \(lightsoninwestsussex.co.uk\)](#)

What's Happening: Local?



Poppy Lunch

1200

Sunday 13 November 2022

North Mundham Village Hall, School Lane, PO20 1LA

Hog Roast, Salads, Puddings

Cash Bar and Raffle

Donation £10

Ticket Number

Please email annie@maclean.myzen.co.uk if you require a vegetarian option

"The annual Poppy Lunch will be held in the North Mundham Village Hall at 1200 on Remembrance Sunday 13th November.

**Tickets are available from
Lynn Mears, Jo Williams, Louise Russell and David Maclean."**

Free Open Weekend

Open Weekend

15 - 16 October 2022



An art-filled weekend of discovery and creativity – all completely free.

Visit Pallant gallery for free and enjoy a host of fun activities whilst you are here. Learn more about our art with talks, tours and "show and tell" sessions taking place throughout the weekend. Inspired to have a go yourself? The weekend will be packed with creative activities to do with the family, from learning to draw figures (no more stick men!) to trying your hand at circus skills.



Everything is free.

Just visit Pallant House [website](#) to book your FREE Tickets

Please forward this edition to your friends, if they would like to receive a regular copy they can email us at mmmeditors@gmail.com Louise Russell & Mick Lovell

What's Happening: Local?

Report on The Mundham & District Gala 2022



The 2022 Gala was held on a very hot July afternoon and was a happy and successful event. The Village Hall was ablaze with colour from the 350 entries for the Flower, Vegetable, Produce, Arts & Crafts and Photography Show; we were particularly pleased that 80 of the entries were for the Junior classes, which were well supported by North Mundham Primary School. It was good to welcome back the many Historic & Classic Vehicles, particularly members from the MG Owners Club Chichester and the Manhood Classic Car Club. We were also very pleased to welcome Jason, our Police Community Support Officer.

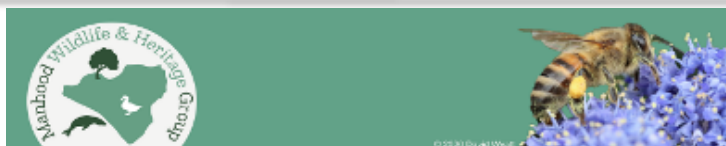
It was disappointing that the Dog Show had to be cancelled, the Huckleberry Vets having advised that it was too hot for our canine friends. However a successful Virtual Dog Show was organised in the weeks following the Gala and judged by Huckleberry Vets the results of which can be found on the Gala website – www.mundhamgala.co.uk - together with all the Flower Show Trophy winners.

Thank you to all the organisations and individuals that ran stalls and attractions. These included the Café Connect team, the Tennis Club, the Playing Field Trust, Chichester District Scouts and the St Stephen's Youth Group. **Just over £4,200 was raised on the day** and three quarters of this has gone straight to the organisations involved and to the other nominated recipients: St Stephen's Church, St Leodegar's Church and music projects at North Mundham Primary School. The remaining funds will help to pay some of the Gala organisational costs, such as the hire of the tables and Marquee and Insurance.

We also very much appreciate the generous donations for the raffle and other stalls from Hunston Post Office, Gilly Johns, Kirklands in Hunston, Mr and Mrs Robin Nott, The Pet Warehouse, Kitty Price, Runcton Farm Shop, The Walnut Tree Pub, Bellfield Nursery in Birdham, Black Dog Nursery in North Mundham, Hill Brothers, Newey Group on Lagness Road, North Farm Nursery in North Mundham, Richard Reed at Wilson's Nursery in South Mundham, Tawny Nurseries in Birdham, Vitacress in Runcton, Barfoots, Tim Clarke from Bowley Farm, Michael and Doris Leeder, Chris and Steve Malby, Peter Ryan from Sidlesham and the Brick Kiln Garden Centre.

And lastly a massive thank you to the team of strong helpers who set up the Village Hall and the Marquee, moved tables and chairs and put up the gazebos to protect us all from the sunshine. And then took everything down and stowed it away. The Gala just would not happen without you!

The AGM and presentation of trophies by the Rev May Barker will take place at 6pm on Friday 7 October in the Large Pavilion at the North Mundham Playing Field. Come along and learn about how we ran the Gala this year and join in the discussion about plans for next year's Gala which will be held on 15 July 2023.



MANHOOD WILDLIFE AND HERITAGE GROUP. Volunteering October 2022

We have lots of interesting sites for you to work on this month. We are going to be doing some Thursday working parties as we have had feedback that Fridays are not convenient for everyone.

Each week they will post the details of where they are going to be working and what we will be doing. Sign up as below to receive these updates.

This is what is have planned for October:

Friday, 7th October - Haydons pond, Almodington

Thursday, 13th October - MWHG Tree Nursery, West Wittering

Friday, 21st October - Triangle ponds with Southern Water team

Thursday, 27th October - Birdham Primary School ditch

We will always send out an email on the morning of a working party if it is going to be cancelled due to dangerous weather conditions or a last minute issue.

TO VOLUNTEER FOR ANY OF THE ABOVE ACTIVITIES PLEASE SIGN UP ON THE [MHWG WEBSITE](http://mhwg.co.uk) SO YOU CAN RECEIVE THESE LATEST UPDATES.

What's Happening: Local?



Chichester Farmers' Market
North and East Street. Every 1st and 3rd Friday of the month, 9am to 2pm
Look out for promotions, offers and events throughout the season





Spring	Summer	Autumn	Winter
<p>1 & 15 April 6 & 20 May</p> 	<p>3 & 17 June 1 & 15 July 5 & 19 August</p> 	<p>2 & 16 September 7 & 21 October 4 & 18 November</p> 	<p>2 & 16 December 20 January 3 & 17 February 3 & 17 March</p> 

www.chichester.gov.uk/farmersmarket
[f ChichesterDistrictEventsandMarkets](https://www.facebook.com/ChichesterDistrictEventsandMarkets)
[@chidiseventsmkts](https://www.instagram.com/chidiseventsmkts)





SUN 13 MARCH 2022
SUN 17 JULY 2022
SUN 16 OCTOBER 2022
10AM-4PM, NORTH & EAST ST
#MORETHANAMARKET



OPEN EVERY WEEKEND FROM 8TH OCTOBER
OPEN EVERY DAY DURING HALF TERM WEEK
free admission

PUMPKIN PATCH

MANOR FARM, BIGNOR, RH20 1PQ

[f/bignormaizemaze](https://www.facebook.com/bignormaizemaze)

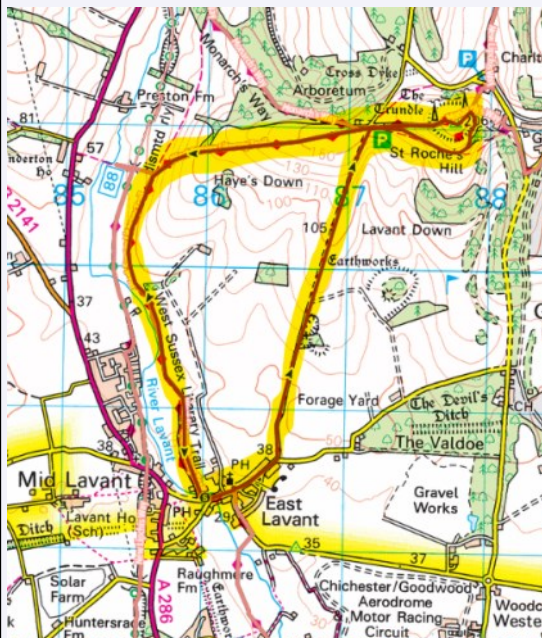



Please forward this edition to your friends, if they would like to receive a regular copy they can email us at mmmeditors@gmail.com Louise Russell & Mick Lovell

Prehistory and Scenery Combine In a Stimulating Autumn Ramble.

The Trundle is a historic site on St. Roche's Hill close to Goodwood Park at 206 m of altitude and within the South Downs National Park. The site is widely visible thanks to its two very modern aerial towers. These symbols of modernity sit atop of a rich and fascinating history which you can enjoy while absorbing the natural beauty and glorious scenery.

Our itinerary starts at SU 863085 close to the river Lavant and adjacent to the whitewashed Royal Oak in Pook Lane, East Lavant, renowned for its beautiful garden and terrace. A lovely refreshment stop perhaps at the end of this 5 mile walk.



We proceed east along Pook Lane till we reach Chalkpit Lane. Where we turn left uphill.

Coming to a small copse on the right the semi-circular group of trees indicates an early industrial chalk quarry and lime kiln providing substantial quantities of quicklime for farming and building over several hundred years. Just to the east of this are the buried remains of an Iron Age settlement, perhaps one of many once common in the area. Excavations have found evidence of 13 round houses.

In the field to the west of the limekilns is the approximate location of the long collapsed and infamous 'Lavant Caves'. Apparently discovered in 1890 and excavated in 1893, their origin remains questionable due to the involvement of Charles Dawson who was later implicated in a number of archaeological deceptions including that of Piltdown Man.

Continuing up Chalkpit Lane we reach the small car park where we will turn right, but just for a moment, turning around, we can appreciate the views to the coast, the Isle of Wight and the green rolling downland.

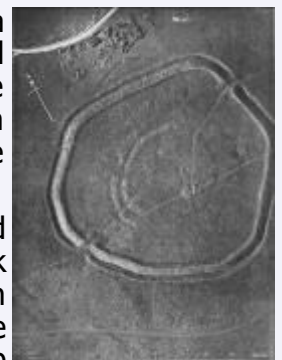


Proceeding up the fairly steep path to the right we come across the outer bank of the Trundle; all that remains of the Iron Age Fort. The fort would have consisted of a high earthwork mound with a wooden palisade constructed on top with two gated entries enclosed by a steep ditch.

The word 'Trundle' comes from the Old English word 'Tryndle' meaning a circle which in this case refers to the remains of the Iron Age (Pre-Roman) Hill Fort seen as the outer ring in this aerial photo. The faint inner ring is the imprint of a Neolithic settlement, one of the earlier settlements on the south coast following the retreat of the glaciers around 10000 years ago and the subsequent arrival of farming culture from Europe.



Having taken a photo by the trig point and admired the 360 degree views, return towards the car park and passing directly through it, follow the path downhill and crossing through a gap in the treeline we descend steeply to a gate where we turn sharp left on the West Sussex Literary Trail south alongside for a brief while the river Lavant. Staying on the trail go left over a bridge and follow the road to East Lavant, our destination.



Conditions: The track in places can be slippery and steep, especially after rain, so suitable footwear is strongly advised and walking poles could be useful.

A gpx track for the walk is available for the Outdooractive app.

Search for 'East Lavant to the Goodwood Trundle'.

Alternatively; see OS Landranger 197 or Explorer 120/OL08 maps.

There's a full history of The Trundle on Wikipedia [The Trundle - Wikipedia](https://en.wikipedia.org/wiki/The_Trundle).

Mick

Please forward this edition to your friends, if they would like to receive a regular copy they can email us at mmmeditors@gmail.com Louise Russell & Mick Lovell

Harvesting Your Garden This Autumn.

Matthew.

Deep golds and reds are the colours of Autumn and many golden crops are ready to be savoured. Only take care when harvesting to protect the precious fruits of your labours. Matthews tells you how.

Now the harvest season has arrived there are plenty of crops that can be harvested in the garden to enjoy.

For example, one of the crops you can harvest this month are carrots. To get the best flavour of your crop it is important to harvest them when they are at their peak. However, it is difficult to tell with carrots as they can be harvested from May to December. So when a carrots top is coming through the soil line, you can gauge the diameter and if is about half an inch it will be ready for harvesting. Do this by grabbing the fronds (green bits) and keep wiggling them until it loosens from the soil to the point you can pull the carrot from the ground. Then you will be able to enjoy your tasty crop whether that is in a soup, a cake, or a nice roast dinner to keep you warm with the cold weather approaching knowing that you grew it yourself!



Another crop which is great to harvest this time of year are tomatoes. Whether it is a fruit or a vegetable, it is a delicious crop. It is best to grow them undercover otherwise this will be the latest you can harvest this crop. The general way to tell when tomatoes are ripe is when they turn red. These days many tomatoes have other colours so another way to tell when they are ripe is by when they are glossy, filled and firm, then you can pull them apart gently from the stem and enjoy them. It is also important to know that the longer a tomato is left to ripen the sweeter it will taste. Why not try one to see if it tastes good before harvesting the crop?



Finally, it is October so obviously a great crop to harvest this month are pumpkins. The best way to tell when a pumpkin is ready to be harvested is when it is its normal colour and the skin is hard enough to the extent you would be unable to push your finger through it. At this point you will be able to cut the pumpkin from the vines leaving 3 to 6 inches attached to the pumpkin. As well as this, make sure to protect yourself from the vines as they can be spikey. Carry the pumpkin from the bottom, and you will then have a great Halloween decoration that can also be enjoyed as a sweet or savoury treat.



Matthew Wiggs: Mobile: 07771 857432, Email: mwiggs@btinternet.com

CROSSWORD.

© Puzzle Choice

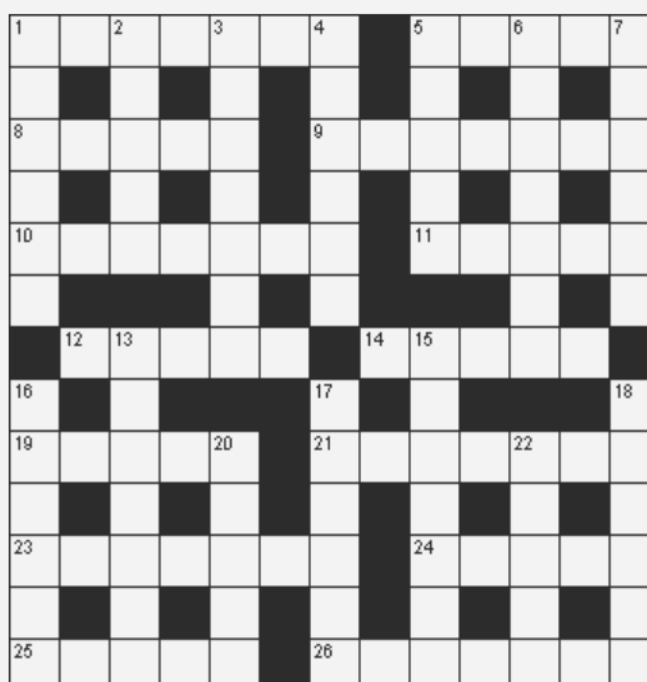
Standard Crossword- ukp039

Across

1. Buccaneers (7)
5. African equine (5)
8. Serious (5)
9. Disregarded (7)
10. Abhorrent (7)
11. Beer mug (5)
12. Intense (5)
14. Thicket (5)
19. Regular hexahedrons (5)
21. Residence (7)
23. Greed (7)
24. Deportation (5)
25. Choose (5)
26. Journeyman (7)

Down

1. Rector (6)
2. Kind of puzzle (5)
3. Deluge (7)
4. Grabbed (6)
5. Regions (5)
6. Edges (7)
7. Fervent (6)
13. Vegetable (7)
15. Remnant (7)
16. Abrasion (6)
17. Photographic equipment (6)
18. Aft (6)
20. Change position (5)
22. Ways out (5)



Please forward this edition to your friends, if they would like to receive a regular copy they can email us at mmmeditors@gmail.com Louise Russell & Mick Lovell

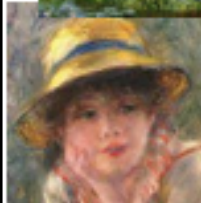


Mundham French Exchange.

Unfortunately our Bistro Evening scheduled for October 14th has had to be postponed until the New Year, but a new date for it will be published soon.



However, continuing our programme of events to whet your appetite for the next French exchange visit, we are planning a lavishly illustrated slide talk exploring how France became the art centre of the Western World. Florence had been the cradle of the Renaissance in the fourteenth and fifteenth centuries and then Rome became the magnet for artists. However by the end of the eighteenth century, Paris was attracting artists from all over the world, to study and to create some of the most memorable paintings of all time, in fact Impressionism is the most successful art movement ever.



Wine, soft drinks, through the pavilion at the village hall, on in your diary now.



cheese and patés will be served part way evening, and it will take place in the small Friday 18th November. So put the date

Tickets will be on sale nearer the time, but for more information ring Celia O'Shea on 07799646390 or email celia@firethorn.me.uk.

Planting Bulbs In October.

Bulbs are a good investment of money and time, offering years of colour in your garden. Autumn is the prime time for planting of hardy spring flowering bulbs.

Plant the right bulb or tuber in the right place because every garden is different. Determining factors are type of soil, sun or shade, sheltered or windy position, not even to mention personal taste!

If you have decided to give bulbs a go, layout is of the utmost importance. For example combine them with early flowering perennials or leafy plants, to create a wonderful display. The striking effects of colourful bulbs against a back drop of evergreens such as heder, viburnum and ilex can be magnificent. Another advantage of planting bulbs in between your perennials is that they will now start to hide the

yellowing and fading leaves. These leaves are the food reserve for your bulb for the next season, so keep on watering and feeding for 6 weeks after flowering.

To encourage root development, both spring and summer bulbs need phosphorous. If bulbs are going to be maintained in a planting bed for more than one year, it is important to supply additional fertilizer. Well rotted cow/horse manure is good, or a general purpose fertilizer (mostly P-K, N is not so important). Apply when first signs of growth appear, after flowering to supply extra energy and also in early autumn. The optimum pH range for bulbs is 6 to 7. Add lime when pH is lower than 6.

When planting small bulbs such as crocus, it doesn't really matter which way you plant them, top or bottom up. This is different with larger bulbs. They have a distinct topside and bottom so planting upside down may result in smaller or lesser flowers.

Most bulbs like to be planted right away; the earlier they flower, the sooner they need to go in. Some species such as Anemone, Allium Paradoxar & Ursinum, Corydalis Bulbosa, Crocus, Erythronium, Fritillaria Meleagris, Galanthus, Leucojum Vernal and Lilium tend to dry out very quickly. So, keep them in peat or sand until you plant them out. When the roots have developed, they shouldn't be prone to frost anymore. Don't cover new planted bulbs with peat, it absorbs rain like a wet blanket and so stunts flower growth.



The Streatham Portrait of Lady Jane Grey.

So you've found an old painting in the attic, it looks interesting, but how do you go about convincing the world of its 'bona fides'? In the story below the authority for acceptance lay with the National Portrait Gallery (NPG) and our reader ably describes the tortuous path in order to gain official approval of their families old and possibly valuable painting.

BACKGROUND

We had an old portrait which specialists had told us was from the 16th century and of a royal princess. It shows a thin young woman who wears a red dress and jewelry typical of a royal lady. **(See p1)** Written on it is 'Lady Jayne'. It is painted on three wooden panels. We believe that the subject of the portrait is Lady Jane Grey, the young Puritan princess who was queen for nine days, and then was executed at the age of fifteen in 1554. We have to find evidence that we are right.

THE PAINTING ITSELF.

We first of all presented our case to the NPG based on the contents of the painting.

1. The fashion of her dress indicates 1553-4.
2. The colour red tells us that it is royal because at that time only royals could wear the colour red. On the robe there are strawberry designs that represent martyrdom. On the collar there are fleurs-de-lis, also a symbol of royalty.
3. She carries a small black prayer book that tells us that she is a believer and a Puritan.

The NPG responded that we still didn't have enough provenance. We could only demonstrate that It had been in the family for a hundred years. It is believed that the painting arrived with antique furniture that a great-grandfather had collected. Letters detailing the paintings presence in our household did not impress the NPG. Where was the portrait before that they enquired, we couldn't say?

ANOTHER PROBLEM

There are several copied portraits of Lady Jane Grey done by lesser known artists and painted for families who wanted to show that they were for the Puritan cause. Every Tudor art scholar has relied on one or other of these portraits for provenance. Probably they would not have been painted during the reign of Mary, who was Catholic. If families already had a portrait of her, it would be hidden.

PROVENANCE

To convince the NPG about our painting, we had to demonstrate good provenance. The Heinz Archive is a library at the NPG where one can order a folder containing all known portraits of a particular model, for example, portraits of Elizabeth 1 or Lady Jane Grey and from time to time, portraits are placed in the wrong file. Luckily a portrait almost exactly the same as ours, though in a worse condition, had been placed in the folder for Elizabeth 1. It came from the Colville family, one of whose descendants was Winston Churchill's private secretary. This portrait had a good provenance back to the time of the Stuarts. The same portrait was also in a catalogue from a 19th century exhibition on Lady Jane Grey at the Society of Antiquaries. A descendant had lent it to the exhibition. Oddly, the NPG, though interested in the Colville portrait and it's provenance, did not follow up by acquiring it.

WHO IS THE ARTIST OF OUR PORTRAIT?

In a Heinz archive file, there is a portrait of Mary 1, dating from 1554, in which the model has the same collar and hat, similar jewelry, and a similar hairstyle to our painting. It is painted by a well-known artist named Hans Eworth. Was it possible that our portrait was painted by Eworth and then damaged in a fire? Another artist may then have recreated the work using the original drawings and by following the style of the well-known portrait of Elizabeth 1 when she was thirteen.

ACCEPTED AT LAST!

Finally scientific analyses were arranged for the painting, first on wood (dendrology), and then on the paint itself. Everything went well. The wood used and the paint used were appropriate for Lady Jane's date: a few years after her life. After these scientific analyses, it was necessary to restore the picture to its original appearance before the damage. **(See right)**

At long last the NPG were satisfied with the analysis and restoration and were very happy to buy our portrait, the so-called 'Streatham Lady Jane', seeing that the similar portrait had a good provenance. Our portrait hung in the NPG for two years, then in Montacute House, Somerset. Though experts continue to debate and change their minds, our portrait is currently hanging in the NPG in London.



Name & Address supplied.

References: [Streatham portrait - Wikipedia](#) [Lady Jane Grey - Wikipedia](#)

QUIZ: LEADING CHARACTERS IN WEST END MUSICALS

- CURRENT, RECENT AND LESS RECENT.

- 1 King George the Third – H
- 2 Edna Turnblad – H-TM
- 3 Colonel Pickering – MFL
- 4 Maria and Tony – WSS
- 5 Skye Masterson – GAD
- 6 Eponine – LM
- 7 Engineer – MS
- 8 Nancy – O
- 9 Mary Magdalene – JCSS
- 10 Katherine Parr – S
- 11 Billy Bigelow – C
- 12 Queen Guinevere – C
- 13 Grizabella – C
- 14 Sally Bowles – C
- 15 Curly – O
- 16 Tuptim – TKAI
- 17 Norma Desmond – SB
- 18 Mother Superior – TSOM
- 19 Tevye – FOTR
- 20 Christine Dyer – POTO



Dragons:

A Meditation By Peter.

I see dragons resting their wings on the forest's crown

I see dragons of amber and red as the dawn breaks the trees

I see dragons soar as the sun rises higher

I see dragons of blue and white hold court in the morning sky.



Recipes: Louise Livens Up Your Autumn Table.

Looking back into my archives of recipes I have found two old recipes that will be very useful in using current berries and fruit. These are a twist on the usual Blackberry and Apple recipes for this time of the year.

TOAD IN THE HOLE WITH APPLE AND THYME

Ingredients	125g plain flour	some whole leaves for decorating.
	2 medium eggs	6 rashers streaky bacon
	300ml semi-skimmed milk	6 good pork sausages
	Salt and pepper to taste	3 tbsp sunflower oil
	1 tbs ready made English mustard	1 large eating apple, cored
	Leaves from 3 sprigs of thyme plus	



Method

Heat the oven to 220C/Gas.Mark7. Tip the flour into a mixing bowl and make a well in the middle. Break the eggs into it and add a splash or two of the milk. Using a whisk, beat together the eggs and milk, then gradually whisk in the flour from around the outside to form a thick batter. Whisk in the remaining milk until the whole mixture is smooth, then season well and beat in the mustard and thyme leaves. Put to one side.

Flatten the rashers of bacon slightly on a board and use them to wrap around the sausages.

Pour 2 tbsp sunflower oil into a 30 cm x 20cm roasting tin. Add the wrapped sausages, turning them in the fat and put them in the hot oven for 15 mins until starting to brown. Meanwhile heat the remaining oil in a frying pan and cook the apple pieces until they begin to soften.

When the sausages have had their time, pull the pan from the oven and place it on the hob over a high heat to keep the fat hot. Carefully scatter the cooked apples among the sausages and pour most of the batter around them. Use your judgment here - you may only need three quarters of it. Scatter the extra thyme sprigs on top, then quickly return the pan to the oven. Cook for 25 - 30 mins, or until the whole thing is puffed and golden.

Serve with Onion Gravy.

This makes a lovely thick sauce, which I think is what's needed for sausages. Feel free to thin it a little at the end if you prefer.

Ingredients

50 g butter	1 tbsp caster sugar
500g onions, peeled and finely sliced	1tbsp plain flour
Leaves from 2 sprigs of thyme	100ml red wine
1 bay leaf	500ml chicken stock



Method

Melt the butter in a large saucepan. Add the onions and thyme and cook over a medium heat, stirring often until totally soft and starting to caramelize around the edges - at least 30 minutes. You want quite a lot of colour or the gravy won't be brown. But don't let them burn. When the onions are softly golden, add the sugar and stir in for a minute then stir in the flour to thicken. Last of all add the wine and stir well. Add a little more wine or stock if you want a thinner sauce.

BLACKBERRY JELLIES

Ingredients

600g fresh plump blackberries, 600g granulated sugar,
Plus extra sugar to sprinkle, 60g liquid pectin, 2 tsp fresh lemon juice

Method

Line a 20cm square tin with baking parchment.

Puree the berries in a food processor or blender

strain through a fine sieve into a large heavy bottomed pan working the pulp well.

Discard the seeds and stir in the sugar

Heat gently, stirring to dissolve the sugar. Turn up the heat and bubble the mixture, stirring frequently until it reaches 114 C. This takes about 15 - 20 mins.

Add the pectin and lemon juice and boil for another 2 mins, stirring constantly. Turn into the prepared tin. Leave to cool and set (about 5 hours) Lay a sheet of baking parchment larger than the tin on a work surface and sprinkle generously with granulated sugar. Invert the tin onto the baking parchment. Remove the tin and peel away the lining paper. Sprinkle over more sugar. Slice into 2 cm squares using a very sharp knife. Store on baking parchment in the fridge.



Crossword Solution from p7. Quiz Answers from p 10.

Solution - ukp039



© Puzzle Choice

- | | |
|---------------------------|-------------------------|
| 1 Hamilton | 11 Carousel |
| 2 Hairspray – the Musical | 12 Camelot |
| 3 My Fair Lady | 13 Cats |
| 4 West Side Story | 14 Cabaret |
| 5 Guys and Dolls | 15 Oklahoma |
| 6 Les Miserables | 16 The King and I |
| 7 Miss Saigon | 17 Sunset Boulevard |
| 8 Oliver | 18 The Sound of Music |
| 9 Jesus Christ Superstar | 19 Fiddler on the Roof |
| 10 Six | 20 Phantom of the Opera |

Attributions/Copyright/Weblinks.

All cartoons and sayings are freely available on social media and are supplied without attribution. Except as stated below the photos are the property of contributors/editors or are freely available without attribution. Copyright attribution is indicated by ©. When including copyright material we take consideration of UK government guidelines: <https://www.gov.uk/guidance/exceptions-to-copyright>. We provide web links in good faith for readers convenience and make every effort to ensure that they are valid and functional. We do not accept responsibility however for any use of a web link. Readers should confirm for themselves of the validity of a link before 'clicking'.

P5	Chi. Events & Markets.	All images from Chichester District Events and Markets - Home Facebook
P6	The Trundle	File:The Trundle, earthworks and view north.jpg - Wikimedia Commons
P6	The Royal Oak	User:Simon Burchell - Wikimedia Commons
P6	River Lavant at E. Lavant.	File:River Lavant - geograph.org.uk - 3842098.jpg - Wikimedia Commons
P7	Carrots	Evan-Amos, Public domain, via Wikimedia Commons
P7	Tomatoes	14GTR, CC BY-SA 4.0 < https://creativecommons.org/licenses/by-sa/4.0/ >, via Wikimedia Commons
P7	Pumpkins	George Chernilevsky, Public domain, via Wikimedia Commons
P10	Les Mis.	[[File:Queen's Theatre by Day Cropped.png Queen's Theatre by Day Cropped]]
P10	George III.	© Pinterest
P10	My Fair Lady	© My Fair Lady Official Website UK & Ireland Tour (myfairladyofficial.co.uk)
P10	Miss Saigon	Fair use, https://en.wikipedia.org/w/index.php?curid=15236582
P10	Carousel	Fair use, https://en.wikipedia.org/w/index.php?curid=47944911
P10	Cabaret	Fair use, https://en.wikipedia.org/w/index.php?curid=66590342
P10	Sunset Blvd.	© Sunset Boulevard in West Hollywood Sygic Travel
P10	Fiddler	File:Fiddler silhouette.svg - Wikimedia Commons
P10	Mask	Image by PIRO from Pixabay
P11	Eating Apple.	Photo by an_vision on Unsplash

This magazine has been put together to put people in touch with one another in the village, to encourage the swapping of plants, recipes, books, Exchange & Mart, hints, ideas and things to do.

'Letters to the Editor' would be very welcome. We seek to encourage people's input to the magazine. Help us fill the following issues and make your voice part of our local life.

Editor's Notes for Published Material

If you wish to advertise an event which takes place during the first two weeks of the month, it needs to be in the previous month's magazine. If it goes in the magazine of the month it will take place, it won't reach all the readers in time. We want to advertise your events very much so please make sure we can. Thank you.

COPY: 400-600 words as a target please, short articles very welcome: Small is beautiful!

Copy should be emailed to editors by 25th of the month to allow for distribution by the first week of the following month.

Any font acceptable, Tahoma or Calibri 11 pt. preferred. We may edit font/text to fit the available space.

NB Letters can be longer. -See Disclaimer.

NB2 All provided images should be royalty free since all images in the magazine are published as royalty-free.

DISCLAIMER

The views expressed in the Mundham Monthly are not necessarily those of the editorial team. The Editors reserve the right to edit and rearrange articles, but will endeavour to do so only where space is limited or where the information will be enhanced. All information is published in good faith but we take no responsibility for errors/omissions or any loss or inconvenience caused by its use.

We are happy to publish letters as 'name and address supplied' but will not include anything sent anonymously that is clearly defamatory or hurtful to a specific individual or group.

The Editorial Team

Please forward this edition to your friends, if they would like to receive a regular copy they can email us at mmmeditors@gmail.com Louise Russell & Mick Lovell

Matthew's Gardening Services

For all your gardening requirements

- Garden clearance
- Grass cutting, lawn treatments & repair
- Landscaping & fencing
- Hedge cutting
- Tree pruning & lopping
- Weeding, planting & border maintenance
- Decking & ponds
- Patio & driveway cleaning
- Regular work or one off's welcome
- and.... we'll take all the green waste away

*Make us your first call
No job too small!*

References available • DBS Checked • Licenced to carry waste • Fully Insured

Call Matthew for a free no-obligation quote
01243 604446 mobile 07771 857432
mwlgg42@gmail.com

