



## One Good Turner...?

### HANDS

- Just two drops can save a life, or end one.  
Poetry from Jackie. p9
- pick fine produce at the Farmers Market. p4
- to the pumps. Your Parish needs you! p2
- Try Our Crossword. p6
- Wine Tasting with Janet? Diary date. p3
- in the air. The Balandis Lilley Concert  
was a great success. p11
- make winter bread and soup. Recipes p8

### FACE

- Winter's Chills. Change the way you see it.  
Art with Celia. p7
- The Tempest! Helena's Shakespeare Quiz. p9
- the truth. Crossword/quiz answers. p12
- it; that greenhouse needs sorting.  
Matthew will put your garden straight. p6

### SPACE

- for a break in Great Malvern or Dublin? p10
- for wildlife. MHWG dates for February.  
Help plant trees & clear vegetation. p3
- on The Manhood Peninsula.  
The March To Protect our Heritage. p10
- Put some in your diary for The Gala. p7

*Louise Reports!*

*Manhood March For  
Our Heritage. p10*

*Balandis Lilley  
Concert. p11*

*plus*

*Small ads p11*



## NORTH MUNDHAM PARISH COUNCIL

Working for the whole community

### North Mundham Parish Council Report

One of the key decisions for the parish council each January is to set the precept – the amount of Council Tax that we will charge to cover the cost of the council's activities – for the coming year. We have set a rate which we calculate will result in a charge of £65.67 for a Band D property, an increase of just £2.79 over last year. This is of course a very minor component of your total Council Tax bill.

Last year, as you may remember, we were helped by the Manhood Wildlife and Heritage Group to revive the Relic Canal in North Mundham and Camic Pond in South Mundham, to enhance their biodiversity potential and improve them as a natural resource and a haven for wildlife. We will be carrying out some more work to clear vegetation on the canal on Wednesday, 23 February between 1000 and 1500. If you can join us, please get in touch with me for more details - any help is welcome even if you cannot be there for the whole session.

You may already be aware of the plans for the Queen's Platinum Jubilee, which will be celebrated with an extra bank holiday in early June. I thought it would be helpful to give you some early idea of what the Parish Council plans to do to celebrate the event. Thursday 2 June is a bank holiday and the day of the Queen's Birthday Parade (Trooping the Colour) and beacons will be lit that evening. We intend that the beacon on the playing field will be lit, at a time to be arranged. There will be another bank holiday on Friday, 2 June, which is the day of a service of thanksgiving in St Paul's Cathedral. On Saturday 4 June (Derby Day) there will be a live concert at Buckingham Palace – the 'Platinum Party' – which will be broadcast. That afternoon and evening we plan to lay on a magic show and disco in the village hall for all the family and, if possible, we will follow this by showing the London concert on a big screen on the field. The parish council will fund the event, so it will be free of charge, but you will need to bring your own picnic and drinks. Sunday 5 June is the day of the Jubilee Pageant in London, and it is suggested that is the day to plan your own street parties.

In the last few weeks I have received two reports of pollution in the stream at Brookside. The first instance was correctly reported to the Environment Agency, and we are still awaiting their report. I heard about the second instance from a fellow councillor, who had been told about it by a local resident. Unfortunately, by the time the news reached me it was far too late to do much about it. In cases like this it is vital that the Environment Agency are told straight away, while there is still an opportunity for them to take samples and gather evidence. So, if you see anything like this, by all means tell the parish council, but only after you have reported it to the Environment Agency on their incident hotline 0800 80 70 60.

Tim Russell, Chairman. 01243 781052. [t.russell@northmundham.org](mailto:t.russell@northmundham.org)

The current Parish Council Newsletter can be found by clicking here. [PC Newsletter](#).

### **Councillors.**

A list of your Parish Councillors can be found here:

[Parish Councillors | North Mundham Parish Council](#)

The Parish Council meetings schedule is here:

[Schedule of Meetings | North Mundham Parish Council](#).

Links to local walks in the parish can be found on:

[Footpaths and Bridleways in and around the Parish | North Mundham Parish Council](#)

### **Some useful emergency contact details are :-**

For planning issues, the Planning Authority is Chichester District Council.

Their general contact number is 01243 785166. For contact out of hours call 01243 785339.

For planning use 01243 534734.

For reporting all sorts of footpath or road defects, you can also use Love West Sussex at:

[Love West Sussex - Love Where You Live](#)

But for street lights of any kind, including traffic lights and illuminated bollards, click on:

[West Sussex Street Lighting Services | Report a fault with an item \(lightsoninwestsussex.co.uk\)](#)

# What's Happening ?



## An Introduction to Wine Tasting



We are pleased to tell you that we have been able to reschedule our wine-tasting experience which had to be cancelled last month because of Covid.

This will now take place in the large pavilion at the Village Centre on

**1<sup>st</sup> April**

So put this date in your diary now to make sure you don't miss out

Janet Cartwright will help you get acquainted with some wines of the world.

£15.00 to include light refreshments.

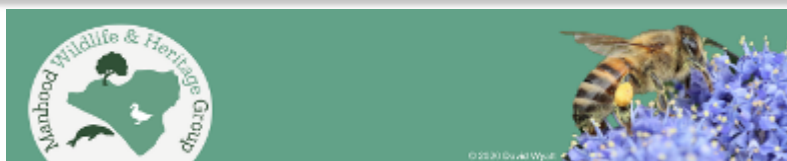
For more information and tickets contact

Janet on 01243 380820/07966 463764. or Celia on 07799 646390.

.....  
And there are still a few places available for this year's visit to La Lucerne  
d'Outremer from  
**19<sup>th</sup> to 22<sup>nd</sup> May**

During the weekend we shall visit Pegasus Bridge, Aromanches-les-Bains,  
Villedieu-les-Poêles and visit a French Supermarché.

Ring Chris on 01243 789978, Jill on 536291 as soon as possible for more  
details and to secure your place for a deposit of £50



## **MANHOOD WILDLIFE AND HERITAGE GROUP. Volunteering February 2022**

We have another busy month planned on a variety of sites through February to improve the biodiversity potential and wildlife corridors across the area. This will include some vegetation removal and tree planting.

Wednesday, 2nd February 2022, 9.30am - 3.30pm, on Chalder Farm, Sidlesham, planting trees to create a hedge.

Friday, 4th February 2022, 10.00am to 2.00pm, at West Itchenor pond, clearing hemlock water dropwort.

Saturday, 5th February 2022, 9.30am to 12.30pm, at Willow Glen, Sidlesham, clearing the banks of this pond.

Wednesday, 9th February 2022, 9.30am to 3.30pm, at Chalder Farm, Sidlesham, planting trees to create a hedge.

Friday, 11th February 2022, 10.00am to 2.00pm, tree planting at a site on the west of the Manhood Peninsula.

Friday 18th February 2022, 10.00am to 2.00pm, at one of the Birdham ponds.

Wednesday, 23rd February 2022, 10.00am to 3.00pm, at the relic canal, North Mundham, clearing vegetation.

Friday, 25th February 2022, 10.00am to 2.00pm, tree planting at a site on the west of the Manhood Peninsula.

Saturday, 26th February 2022, 9.30am - 12.30pm, old Chalder train station, Sidlesham, vegetation clearing.

**Please do come along and join us even if you have never done anything like this before. We will offer you a warm welcome and show you what to do. We can't guarantee a water vole sighting but we can make sure there is cake and laughter!**

**TO VOLUNTEER FOR ANY OF THE ABOVE ACTIVITIES PLEASE SIGN UP ON THE [MHWG WEBSITE](#)**

*Please forward this edition to your friends, if they would like to receive a regular copy they can email us at [mmmeditors@gmail.com](mailto:mmmeditors@gmail.com) Louise Russell & Mick Lovell*



# What's Happening, Chichester.



**The Awards Winning Farmers Market is on North and East Street on**

**4th/18th February & 4th/18th March.**

**Fill your cupboards with locally grown, caught and made produce!**

Besides being fresh and tasty, all produce will help support our local economy and lowers the environmental impact.

**All stallholders are required to process, grow, rear, bake, and/or preserve all their produce and be based within 50 miles of Chichester.**

**To find out which local producers have stalls please click on :**

[About the Farmers' Market: Chichester District Council](#)



**Chichester District Events and Markets**  
26 January at 12:00 · 🌐

👉 The Cross Market & More, Chichester - DATES ANNOUNCED FOR 2022 👉  
After a successful first event in 2021 we are very excited to be announcing 3 more dates for 2022!  
For updates follow us at:  
[www.facebook.com/ChichesterDistrictEventsAndMarkets](https://www.facebook.com/ChichesterDistrictEventsAndMarkets)  
[#morethanamarket](#)



SUN 13 MARCH 2022  
SUN 17 JULY 2022  
SUN 16 OCTOBER 2022  
10AM - 4PM, NORTH & EAST ST  
[#MORETHANAMARKET](#)

84 4 comments 15 shares

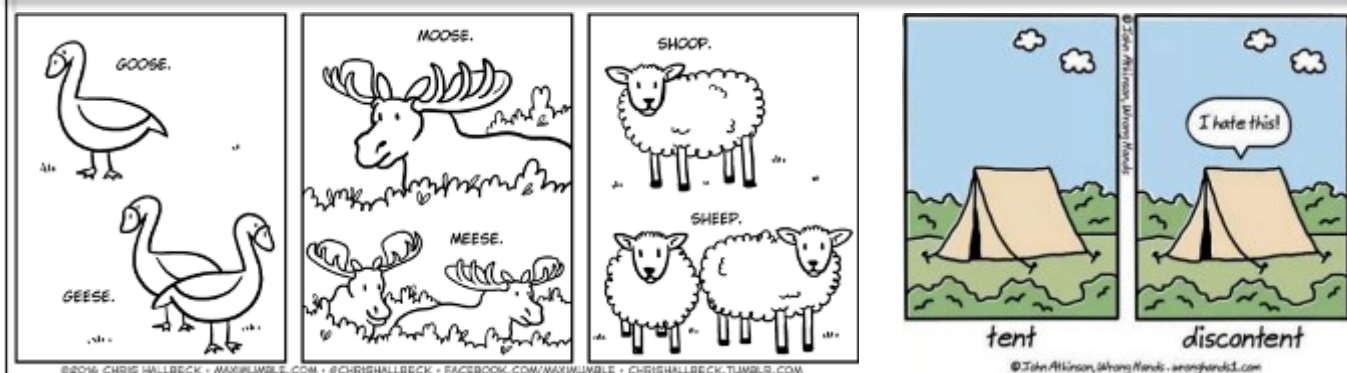
**Chichester District Events and Markets**  
14 January at 10:00 · 🌐

If you've made a new year's resolutions to keep fit, you may be interested in some great running events coming up at Goodwood:

- 👉 Saturday 5th Feb – Kingley Vale Half Marathon, Goodwood Racecourse [www.ukrunningevents.co.uk](https://www.ukrunningevents.co.uk)
- 👉 Sunday 6th Feb, Chichester 5k and 10k, Goodwood Motor Circuit [www.chichester10k.co.uk](https://www.chichester10k.co.uk)
- 👉 Sunday 13th Feb, Running GP, Goodwood Motor Circuit [www.runninggrandprix.com](https://www.runninggrandprix.com)

**To have the latest Facebook information on the above and all Chichester events please click on:**

[Chichester District Events and Markets | Facebook](#)



Please forward this edition to your friends, if they would like to receive a regular copy they can email us at [mmmeditors@gmail.com](mailto:mmmeditors@gmail.com) Louise Russell & Mick Lovell

## Petworth Park: Wildlife, Scenery and Great Art; A Family-friendly Walk.

Many people visit Petworth House to admire JMW Turners majestic canvasses and to view one of the finest art collections that the National Trust possesses.

Fewer may know of the large park that borders it and which drew Turner back to capture the parks breath-taking natural vistas whatever the season. This walk can be enjoyed on it's own or enhanced by a visit to baroque Petworth House (free to National Trust members) with it's fine art and furniture.

Petworth Deer Park is open from 8am in both summer and winter and our walk starts at the NT North Car Park on the A283 highlighted at the top of the map.

NB the entrance is about 1 mile north of Petworth House parking.

We start the four mile amble by heading up to Shepherds Lodge cottage.

On a sunny winters morning the low lying mist covers the area below the walk and makes us feel like we are floating in the air.



Looking across the 700 acres of parkland sculpted by Lancelot 'Capability' Brown we may share the landscape with some of the parks 700 'chilled-out' Fallow Deer; a herd which was introduced to the park some 500 years ago. The deer prefer this quiet end of the Park.



Continuing up past an ancient sweet chestnut tree we walk towards Upperton Monument, the highest part of the Park; the going can be occasionally steep and muddy though the views are well worth the effort.

With the Upper Pond in prospect below us, we follow the bowl of the park down over the sometimes steep and occasionally muddy path. Looking into the Park as we pass through the grove of trees may offer sights of the Fallow Deer browsing here and there. The Upper Pond is in fact a picturesque lake where geese and wildfowl abound and a refreshments stop could usefully be made here whilst enjoying the pastoral scene.

Continuing round the pond we approach National Trust Petworth House and its gardens through a large set of wrought iron gates giving access to the usual NT facilities. To visit the open rooms in the house there's an entrance fee for non-NT members. This year, up to the 27th February, some of the private apartments of the house are open for viewing. We return through the gates and turn right for the level walk along the Park boundary and via the Lower Pond to the North Car Park where we began.

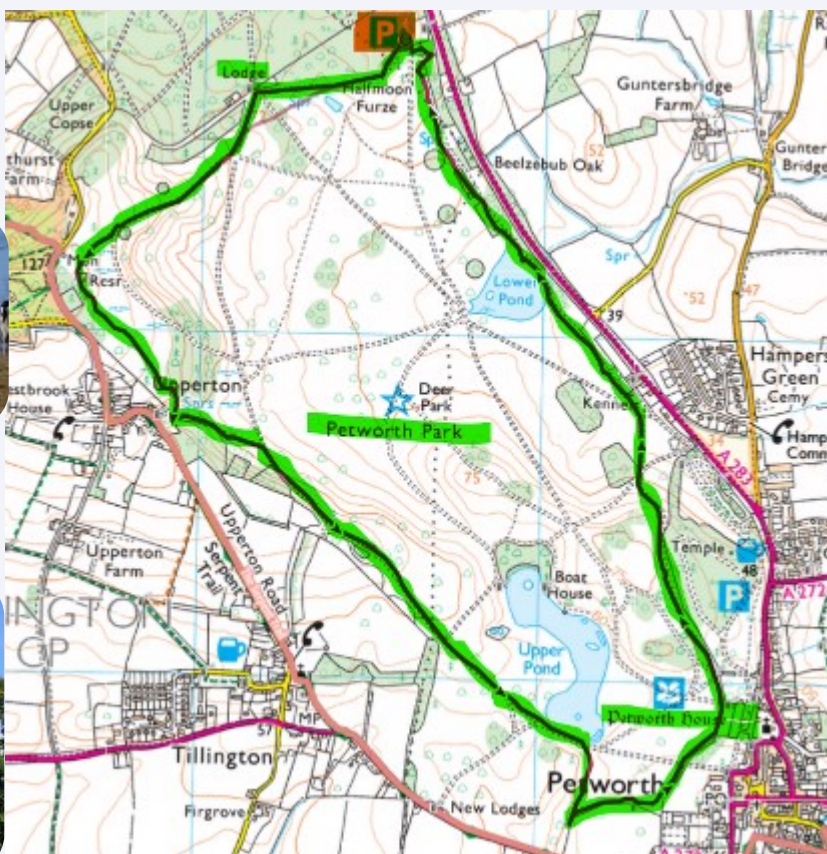
### **Summary of the walk.**

4 miles long ; minimum time: 2hr; typically grass and gravel though occasionally steep and muddy! The going is mostly easy though sometimes moderate and slippery; these sections may not be suitable for people of limited mobility who could use the alternative paths shown. Suitable footwear is strongly advised. Dogs should be kept under close control and on a lead in the gardens.

**Dogs must not approach or chase deer at all times; this will cause a welfare issue that may result in death.**

**Parking at the North Car Park is free for National Trust members, and £3 for non-members. This can be paid by a PayByPhone contactless service (location number 803378); details are in the car park.**

**Mick**



Dewy Morning. JMW Turner.



## What to do in the garden this February . Matthew.

Now February has arrived, it is a perfect time to start preparing your garden for spring. Although it is still cold and wet outside, there are lots of jobs to get done to keep you busy. For example, this month is a great time for you to prepare your greenhouse, because sowing season is just around the corner. You can do this by tidying up the greenhouse and disposing of old compost or debris that could be covering any pests. Before you begin to sow, make sure there is the right amount of ventilation, heat, and shade to improve your greenhouse, so you can sow crops to their full potential. As well as this, it is important to prevent humidity increasing on sunny days, therefore you should keep the greenhouse well-ventilated, by placing roof vents and side vents. There is a wide range of seeds to sow in your greenhouse for early flowers, such as: Ammi, Celosia, Cerinthe, cornflowers, Saintpaulia, and Pelargonium, all in trays. As well as planting bulbs, like Achimenes, Begonia, Gloxinia, Gloriosa and Hippeastrum. Too add to this, you can also sow tasty winter salads to harvest in the next few weeks. It is also helpful to prepare for the sowing season by giving empty pots and seed trays a proper clean and scrub.

Another job to do in the garden this February is to keep on top of garden maintenance. Such jobs include, giving your lawn mower a basic service whilst it is not being used as much, fix any damaged fences on dry days, clean and sharpen your garden tools, and clear away any leaves or moss from your garden to keep it tidy and prevent the grass from being starved of light and weakening it. Although it is difficult, it is also best to try and keep off your grass as much as you can this month, as the soil can become compacted and damaged.

As well as this, as always, another job to do this month is to look after wildlife. These jobs consist of putting up bird boxes in spots in the garden that are sheltered such as, on sheds, walls, or tree trunks, cleaning out and scrubbing bird feeders continually maintaining hygiene, providing high calorie and energy foods for birds to supply them a good food source to get through the winter, and lastly topping up bird baths on a daily basis, with fresh water.



**Matthew Wiggs:** Mobile: 07771 857432, Email: [mwiggs@btinternet.com](mailto:mwiggs@btinternet.com)

## CROSSWORD.

© Puzzle Choice

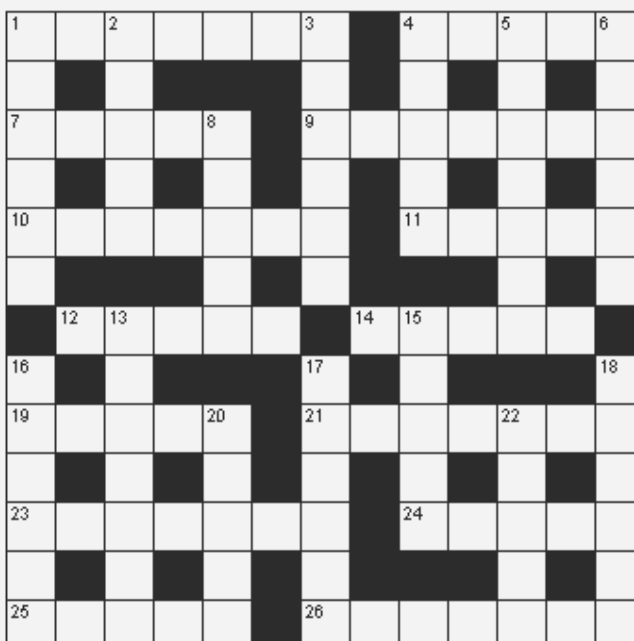
Standard Crossword- ukp036

### Across

1. Mode (7)
4. Pole tossed in the Highlands (5)
7. Relating to the moon (5)
9. Diplomatic (7)
10. Aromatic herb (7)
11. Cove (5)
12. Main artery (5)
14. Sturdy (5)
19. Relinquish (5)
21. Burrowing rodent (7)
23. Four-sided parallelogram (7)
24. Stories (5)
25. Abated (5)
26. Despised (7)

### Down

1. Bird of prey (6)
2. Meaning (5)
3. Country (6)
4. Desert plants (5)
5. Perplexed (7)
6. Connect (6)
8. Respond (5)
13. Forbidding (7)
15. Let in (5)
16. Veer (6)
17. Dissertation (6)
18. Rubbed out (6)
20. Flowed back (5)
22. Claw (5)



## Art: Celia.

February is often one of the coldest months of the year and this painting by Natalia Goncharova, seems to me to sum up winter in a country with one of the harshest climates.



Born in Russia in 1881 she trained as a sculptor before moving to Paris (where she lived until her death in 1921). She was heavily influenced by the primitive nature of Russian icons and by Russian folklore. The peasants gathering wood (painted in 1911) have a sculptural quality and a simplicity about them. The bodies of the right hand pair form parentheses, echoed in the figure on the left. She was very influential on Western modernism, see how she has abandoned three dimensionality for flat forms on the canvas, and the figures, although the subject of the painting, occupy little more than a third of the picture surface. The top portion is entirely

taken up by the tree and the clouds and snow are painted in a non-representational way to form an abstract pattern.

Compare this painting with Van Gogh's 'Miners' Wives Carrying Sacks of coal' 1882, 30 years earlier. Goncharova depicts the hard Russian winter but it is quite decorative, whereas although Van Gogh also shows monumental figures, mostly from the rear trudging through snow, the atmosphere is altogether more drab and dreary. The Russian figures are superimposed on the landscape whereas Van Gogh's, faceless women, whilst also being semi-abstract, seem to grow out of the soil. The artist's aim was to emphasise the impact winter had on their already harsh, wretched existence. He was at the time working as a lay evangelist in the coal mining region of the Borinage in Belgium, and these faceless peasants toil under their heavy loads, their labours stretching into the distance, seemingly without end.



C O'Shea Feb.2022



### Mundham & District Gala 2022

Please save the date for this year's Gala

**Saturday 16 July 2022**

North Mundham Playing Field and  
Village Centre, School Lane  
PO20 1LA

WHAT DO YOU CALL AN  
ALLIGATOR IN A VEST?



AN INVESTIGATOR.

## Recipe: NORDIC SEED AND NUT LOAF. From Mary Berry's Love to Cook.©

**Makes 1 x 900g ( 2lb) Loaf    Freezes well**

**Tags: Gluten-Free, Vegetarian, Nuts, Bread, Baking, Easy.**

This feels so healthy and is gluten free. Chia seeds are an edible seed from a plant native to Mexico and related to the mint family. A delicious combination of close firm texture and nutty flavour. Great spread with butter and served with gravadlax or smoked salmon, charcuterie, cheese and pickles or as a canapes base.

### Ingredients

4 large eggs  
3 tbsp olive oil  
50g (2oz) soft dried dates finely chopped  
¼ tsp sea salt  
75g (3oz) pumpkin seeds  
75g (3oz) sunflower seeds  
150g (5oz) pecan nuts finely chopped  
50g (20z) sesame seeds  
3 tbsp chia seeds



### Method

Preheat oven to 180.C. 160.C.fan. Gas 4.

Grease the base and sides of a 2lb loaf tin and line with non-stick baking paper.

Break the eggs into a bowl and beat with a fork until combined. Add the remaining ingredients and mix well using a wooden spoon.

Pour the mixture into the loaf tin and bake for 45-50- minutes, until golden brown and firm in the centre.

Leave to cool in the tin for 5 mins, then loosen the edges with a palette knife, remove from the tin and place on a wire rack to cool completely. Slice thinly.

**Louise**

## Recipe: Joe Wicks Super Easy Soup. ©

Joe Wicks is well known as [The Body Coach](#) and his web site has plenty of quick, easy and tasty [recipes](#) .

**On a cold winters day this soup is just the thing to give you that 'warm right through' feeling.**

If you like soup you're going to love this Super easy roasted vegetable soup recipe.

- Chop up: 2 carrots, 1 leek, 2 red peppers, 2 red onions, 3 whole garlic cloves and throw it all in a roasting tin.
- Drizzle with olive oil, salt and pepper and a sprinkle of smoked paprika. Roast for 25 mins on 200C.
- Add a vegetable stock cube to 500ml of boiling water in a blender. Add one tin of chopped tomatoes. Finally add the hot roasted veg to the blender and whizz it all up for about 3 minutes.
- Enjoy !



Store in an airtight container for up to a week– if it lasts that long!

**Mick**



## **Two Drops: a tribute to Karen Wetterhahn who died from toxic poisoning: 1997.**

Degree from St Lawrence, Professor from Columbia  
Founder of Women in Science at Dartmouth,  
Head of Toxic Metals Research Team which drew  
Seven-million-dollars of government funding  
On how toxic metals may cause cancer.

A summer weekday in her lab, a plume of woodsmoke drifts in:  
A bicycle skids and squeals. She blinks, simultaneously  
Two drops of poison from her pipette land on her thin glove.  
She pulled them and binned them safely,  
Inspected her hand. Blemish free. Burn free.  
Standard safety protocol for 14<sup>th</sup> August 1996.

Three weeks later: nausea, 15lbs in weight loss  
Falls, difficulty with limb coordination,  
Hearing depletion, peripheral vision deficit. Unsafe.  
A woman who now walked into walls.  
That year Karen was the one who knew  
The most in the world about the toxic effect of dimethyl mercury.

Months later, after tests, spinal taps, scans,  
Specialists concluded her symptoms matched that of  
Mercury poisoning so the August two drop safety event was revisited.  
Two rounds of chelation therapy worked for a while,  
A standard process to soak out the effects of poison.  
As her health crumbled, Karen spoke of improving lab safety:  
Two pairs of gloves made of stronger materials to protect  
Skin.

Torpor, coma, death age 48 for Karen.  
Followed by safer work practises followed at Dartmouth and elsewhere.  
Her autopsy scan showed the toxic tenant lodged in her brain.  
Cause of death, 'delayed onset neurological disease'.  
Her ground-breaking, research hungry brain, broken.  
But not in vain.

Two drops brought death.  
Today, two drops show Covid.  
Two drops can confer grace.

**Jackie Lovell**



Karen Wetterhahn

### **QUIZ: TWENTY CHARACTERS FROM SHAKESPEARE'S PLAYS– Helena Millen**

- |   |  |
|---|--|
| <b>1 Caliban - TT</b>                   | <b>11 Desdemona – O</b>                  |
| <b>2 Mistress Ford – TMWOW</b>          | <b>12 Rosencrantz – H</b>                |
| <b>3 Malvolio – TN</b>                  | <b>13 Banquo – M</b>                     |
| <b>4 Pyramus – AMND</b>                 | <b>14 Friar Lawrence – RAJ</b>           |
| <b>5 Portia – TMOV</b>                  | <b>15 Regan – KL</b>                     |
| <b>6 Rosalind – AYLI</b>                | <b>16 Volumnia – C</b>                   |
| <b>7 Bianca – TTOTS</b>                 | <b>17 Calpurnia – JC</b>                 |
| <b>8 Leontes, King of Sicily – TWT</b>  | <b>18 Ann Boleyn – KHTE</b>              |
| <b>9 Antipholus of Ephesus – TCOE</b>   | <b>19 George, Duke of Clarence – RTT</b> |
| <b>10 Arthur, Duke of Brittany – KJ</b> | <b>20 Imogen – C</b>                     |

# GREAT STAYCATIONS.

A great staycation that has everything you need from a break except the aggro. Maybe you could sneak in a couple of days in February/March or alternatively start Spring on a positive note.

Below are a few places, adored by readers and big on joy, that we've chosen to whet your appetite.

## Great Malvern; a favourite long weekender from Jackie & Mick.

The rocks of the Malvern Hills jut out of the Severn Plain like the teeth out of a saw. Though only 8 miles long they rise to over 400 metres, guaranteeing a vigorous ramble as well as spectacular vistas. Maps and much more from [Malvern Tourist Information](#). [Tourist Information Centres - Visit The Malverns](#)



The town centre is full of old book shops, bric-a-brac and cosy cafes'- no urban rush here—and [Visiting — Great Malvern Priory](#) is worthwhile and surprising whatever the weather.



And who could resist a factory tour at the home of [Morgan Cars](#)

—a classic British marque of worldwide renown.



## Dublin. A city you can walk around , and there aren't many of those.

Walk into history with a visit to The General Post Office.

The bullet holes are there from 1916. 'A Terrible Beauty Is Born' -WB Yeats.

The Oscar Wilde statue: tucked away in secluded [Merrion Square](#).

Let's face it, you're really going to want to see it, ...or you're really NOT.

We loved it.



Ulysses was published exactly 100 years ago. You could read the book in

Dublin .. or you could walk it, with a Ulysses tour in it's centenary year. Grab a Guinness and go! **MICK**

## THE MARCH AGAINST URBANISATION ON THE MANHOOD PENINSULA.

**LOUISE**

I attended the march on Saturday 29th January which started at Priory Park and continued down North Street to the West Sussex County Council Offices off West St. There were well over 1000 people who turned up waving banners and shouting for **No More Building**. I was sorry to see virtually nobody under the age of 50 marching. We are all demonstrating for the future of our villages and it will be the young who inherit those villages and all the problems that will come from too much urbanisation with no further infrastructure for sewage, schools, hospitals, medical centres and the lack of a northern route to relieve the congestion on the A 27. We will need much more support from all ages and walks of life if things are to improve.

Gillian Kegan was conspicuous by her absence leaving a very good opportunity for the Lib-Dem West Sussex County Councillor Andrew Kerry-Bedell to give an extremely eloquent and informative speech in her place. A boo went up from the crowd when Gillian's name was mentioned as the general feeling seemed to be that Gillian Keegan is giving very little support for the things that matter to us in our community.

The petition has been circulated via e-mails to thousands of people but more support is needed if you do not want this lovely area of Chichester and the Manhood Peninsular and the harbour villages to be ruined by developers for a quick profit.



Please forward this edition to your friends, if they would like to receive a regular copy they can email us at [mmmeditors@gmail.com](mailto:mmmeditors@gmail.com) Louise Russell & Mick Lovell



## Small Ads & Notices.

**The Balandis-Lilley Over 50's Dance Group Concert**, as advertised in the January MMM, took place on Friday 28th January 10 am in North Mundham village hall.

It was extremely well attended and a great success with the standard of dancing excellent. Some very generous people donated lovely raffle prizes and a cheque for over £530.00 was presented to Jaine Wild on behalf of the WSWP. [Please see their ad underneath.](#)

Here are some photos of the dance group and the cheque presentation.



**A message you  
can't ignore?...**

- COVID Passport Application
- Your account—Frozen
- Message couldn't be delivered
- Membership payment—Failed or Declined
- Confirmation of a payment you didn't make

### Staying Safe Online

There's been a marked increase in the number of phishing emails putting pressure on people to respond immediately, or very quickly, to a message received.

Such urgent requests aim to bulldoze you into acting without delay  
... Don't respond!



- Don't click on any links—especially ones giving you the option to 'Reject' rather than 'Apply' for an offer—both may be bogus
- If you do click on an email link which asks you to reveal your login details including password—don't go any further—close the message
- Always use an alternative way to check the validity of anything you're unsure of
- If in doubt—STOP—ask someone you trust to help you
- Change your password on any accounts you think may have been compromised and use multi-factor authentication (eg text to mobile) if available

**MARCOM Computing**  
[jennifer@marcomdef.co.uk](mailto:jennifer@marcomdef.co.uk)  
01243 787478

**Matthew's  
Gardening  
Services**

**Small Ads!**

**For all your gardening requirements**

Garden clearance  
Grass cutting, lawn treatments & repair  
Landscaping & fencing  
Hedge cutting  
Tree pruning & lopping  
Weeding, planting & border maintenance  
Decking & ponds  
Patio & driveway cleaning  
Regular work or one off's welcome  
and.... we'll take all the green waste away

*Make us your first call  
No job too small*

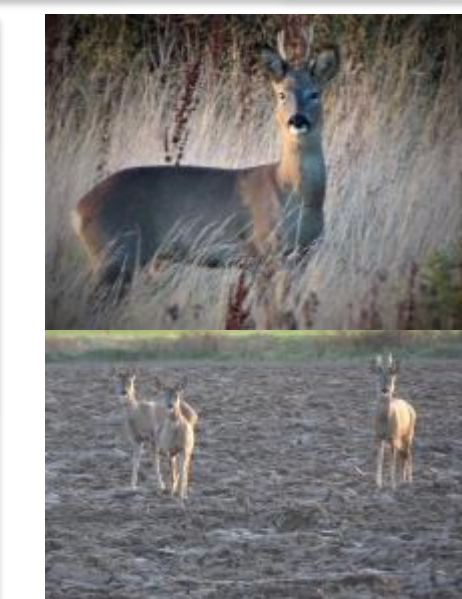
References available • DBS Checked • Licenced to carry waste • Fully insured

Call Matthew for a free no-obligation quote  
01243 604446 mobile 07771 857432  
mwiggs42@gmail.com

### West Sussex Wildlife Protection.



Jaine with rescued fawn  
following dog attack.



Roe Deer in N Mundham.

T. Russell

Last year was one of the busiest years ever for [the WSWP](#). They need volunteers desperately.  
**Call 01243 825804 and ask for Jaine or Simon.**

*Please forward this edition to your friends, if they would like to receive a regular copy they can email us at [mmmeditors@gmail.com](mailto:mmmeditors@gmail.com) Louise Russell & Mick Lovell*



## Crossword Solution from p6.

## Quiz Answers from p9.

Solution - ukp036



© Puzzle Choice

- 1 The Tempest 2 The Merry Wives of Windsor
- 3 Twelfth Night 4 A Midsummer's Nights Dream
- 5 The Merchant of Venice 6 As You Like It
- 7 The Taming of the Shrew 8 The Winter's Tale
- 9 The Comedy of Errors 10 King John 11 Othello
- 12 Hamlet 13 MacBeth 14 Romeo and Juliet
- 15 King Lear 16 Coriolanus 17 Julius Caesar
- 18 King Henry the Eighth 19 Richard the Third
- 20 Cymbeline

### Attributions/Copyright/Weblinks.

Cartoons and sayings are freely available on social media and are supplied without attribution.

Except as stated below the photos are the property of contributors/editors or are freely available without attribution.

Copyright attribution is indicated by ©

When including copyright material we take consideration of UK government guidelines: <https://www.gov.uk/guidance/exceptions-to-copyright>.

We provide web links in good faith for readers convenience and make every effort to ensure that they are valid and functional. We do not accept responsibility however for any use of a web link. Readers should confirm for themselves of the validity of a link before 'clicking'.

P1	Petworth Deer Park	© Wikipedia
P3	Chi. Events & Markets.	All images from Chichester District Events and Markets - Home   Facebook
P5	JMW Turner image.	© Wikipedia.
P5	Fallow Deer	Magso.chi, CC BY 2.0 < <a href="https://creativecommons.org/licenses/by/2.0/">https://creativecommons.org/licenses/by/2.0/</a> >, via Wikimedia Commons
P5	Upper Pond	Jim Linwood from London, CC BY 2.0 < <a href="https://creativecommons.org/licenses/by/2.0/">https://creativecommons.org/licenses/by/2.0/</a> >, via Wikimedia Commons
P5	Upper Pond	J. M. W. Turner, Public domain, via Wikimedia Commons
P6	Greenhouse	Image by Photo by Rebecca on Unsplash
P6	Lawn	Image by PublicDomainPictures from Pixabay
P6	Saintpaulia.	Kor!An (Корзун Андрей), CC BY-SA 3.0 < <a href="https://creativecommons.org/licenses/by-sa/3.0/">https://creativecommons.org/licenses/by-sa/3.0/</a> >, via Wikimedia Commons
P6	Birdbath.	Image by accipio789 from Pixabay
P7	Painting.	Jan Steen, Public domain, via Wikimedia Commons
P8	Loaf Image.	From Mary Berry's Love to Cook.©
P10	Malvern Hills.	David Martyn Hunt, CC BY 2.0 < <a href="https://creativecommons.org/licenses/by/2.0/">https://creativecommons.org/licenses/by/2.0/</a> >, via Wikimedia Commons
P10	Great Malvern Priory	The original uploader was Daderot at English Wikipedia., CC BY-SA 3.0 < <a href="http://creativecommons.org/licenses/by-sa/3.0/">http://creativecommons.org/licenses/by-sa/3.0/</a> >, via Wikimedia Commons
P10	Morgan Plus Six.	Alexander Migl, CC BY-SA 4.0 < <a href="https://creativecommons.org/licenses/by-sa/4.0/">https://creativecommons.org/licenses/by-sa/4.0/</a> >, via Wikimedia Commons
P10	Oscar Wilde Statue	By Phil Nash from Wikimedia Commons CC BY-SA 4.0 & GFDLViews, Attribution, via Wikimedia Commons

This magazine has been put together to put people in touch with one another in the village, to encourage the swapping of plants, recipes, books, Exchange & Mart, hints, ideas and things to do.

'Letters to the Editor' would be very welcome. We seek to encourage people's input to the magazine.

Help us fill the following issues and make your voice part of our local life.

### Editor's Notes for Published Material

If you wish to advertise an event which takes place during the first two weeks of the month, it needs to be in the previous month's magazine. If it goes in the magazine of the month it will take place, it won't reach all the readers in time. We want to advertise your events very much so please make sure we can. Thank you.

**COPY:** 400-600 words as a target please, short articles very welcome: Small is beautiful!

Copy should be emailed to editors by 25th of the month to allow for distribution by the first week of the following month.

Any font acceptable, Tahoma or Calibri 11 pt. preferred. We alter it to fit the available space.

NB Letters can be longer. -See Disclaimer.

NB2 All provided images should be royalty free since all images in the magazine are published as royalty-free.

### DISCLAIMER

The views expressed in the Mundham Monthly are not necessarily those of the editorial team. The Editors reserve the right to edit and rearrange articles, but will endeavour to do so only where space is limited or where the information will be enhanced. All information is published in good faith but we take no responsibility for errors/omissions or any loss or inconvenience caused by its use.

We are happy to publish letters as 'name and address supplied' but will not include anything sent anonymously that is clearly defamatory or hurtful to a specific individual or group.

**The Editorial Team**

Please forward this edition to your friends, if they would like to receive a regular copy they can email us at [mmmeditors@gmail.com](mailto:mmmeditors@gmail.com) Louise Russell & Mick Lovell