



Halnaker Windmill
Eugen Kus.

Whose Afraid of the Big Bad Woolf?

- Virginia did much of her writing in Sussex. Helena tells us why. p6
- And her sister sustained a great creative tradition nearby. p7
- Maybe not wolves but there are plenty of other creatures we can discover in our gardens and nearby. Get involved? p5

I'm No Picasso But...

- Celia knows about someone who is! p4
- He's a Man with a Van...Gogh? William's brilliant Lockdown project. p3
- I know a comet when I see one. Eugen's stunning Neowise photo. p4

Grounds for Optimism.

- Tim Clarke's lovely garden opened during Lockdown. p2
- The Virtual Flower Show brought Mundham and District together on-line. p2
- But Planning applications could fly if we don't Stay Alert! **PC update and extra ordinary meeting.** p10/11

Say Cheese!

- Lou's Lovely Lollipops—Parmesan style! p9
- Tomato Trickery. Recipes for growing success. p9
- Not so easy to smile now? Quiz and Crossword on p8
- Answers to the Quiz and Crossword. p12

Should you need medical help during Lockdown.

The NHS are concerned that many people are not seeking the medical help they may need at this time so:

- If you need medical help you can contact your GP practice.
- If it's urgent please use the NHS 111 online service or call 111.
- If it's a serious or life-threatening emergency, call 999.
- If you are told to go to hospital, it is important that you do go.

Best Wishes From Louise and Mick.

Some Further Links.

- N. Mundham Parish Council COVID-19 web page. <https://northmundham.org/coronavirus-covid-19/>
- [Chichester at Home](#) have put together a list of local businesses offering delivery of fresh produce, groceries, meals and home/garden items.
- If you need help, or if you want to volunteer, West Sussex County Council are also running a 'Community Hub' which you can access through this link: [Community Hub](#) or via a direct link at the top of the WSCC Home Page.
If you have no access to the internet and need help you can call the Community Hub on 0330 222 7980.
- Mick has found a helpful Facebook group is 'West Sussex Covid 19 Mutual Aid'; you can use this link and join: <https://www.facebook.com/groups/2676801359115345/>

Please forward this edition to your friends, if they would like to receive a regular copy they can email us at mmmeditors@gmail.com Louise Russell & Mick Lovell

What's On + Exchange and Mart



Cattle Market Car Park, 9am - 2pm.

1st & 3rd Friday of every month

The Farmers Markets this month are on Friday 7th and 21st August as **FOOD ONLY** markets, in a temporary location at Cattle Market Car Park, Chichester. This is a health and safety measure in order to reduce the number of people in the main high street at any one time. The market will continue to be held in this temporary location until further notice. It is preferred that you pay by Card and not cash, all traders will be operating in this manner. **Strict social distancing measures will be in place.**



Thank you Tim Clarke.

Last year some of you in the village will have enjoyed sitting in Tim Clarke's lovely garden which he opened for the Open Gardens. Sadly this year due to Covid 19 of course we have not been able to hold our usual very popular Open Gardens but Tim's garden was looking at it's best so he invited a few people from the North Mundham Flower Club on 23rd June to enjoy the best of his garden.

We hope you enjoy these photos taken by Joy Whiting.

Louise



Mundham and District Virtual Flower Show

The Mundham & District Gala Committee would like to thank everyone who supported the Virtual Flower Show with their photographs. The VFS page will remain live on the Gala website for a while so if you haven't had a look to see some of the wonderful photographs of flowers, plants, vegetables, soft fruit, art, crafts and cookery submitted by our supporters please do so and remember to share the galleries with your family, friends, neighbours and bubbles. The Gala and Flower Show will be back on Saturday, 17 July 2021 and we look forward to seeing you all there. In the meantime, we will keep you updated with latest news on the Gala website www.mundhamgala.co.uk as well as our Facebook and Twitter pages.



William's Camper Van—A Lockdown Project. Interview With Louise.

WHAT DID YOU DO DURING LOCKDOWN?

Read about the inspirational William Stephens, of South Mundham, who bought an old Mercedes van and renovated it into a camper van.

Hi William, I understand this is your gap year, would you mind answering a few questions for our readers who might be encouraged by your innovation ?

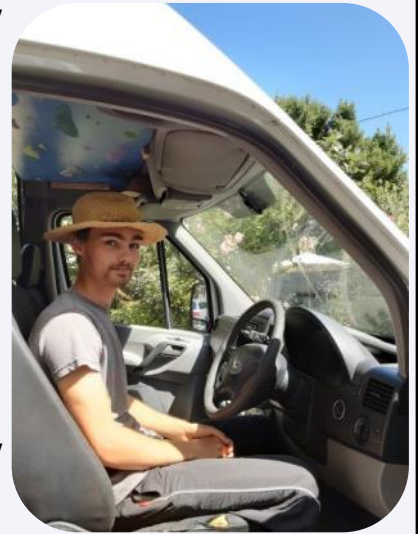
1. What inspired you to find a van and renovating it into a camper van in the first place?

For a while I had wanted to do a road trip around the British Isles, with my mountain bike in tow, then the idea grew to do this during my gap year. Unable to do this because of the lockdown, I made the most of the time, and the money I'd earned from gardening, to fully convert my van and set it up for rentals in the future.



2. Where did you find the van and what sort of budget did you give yourself ?

For a year I had been watching the second-hand market and then a few were for sale nearby and I found my van in West Ashling. My budget started off at £1000, but then I realised it was going to cost much more !



3. When the van was finished did you plan to take it on a long journey, if so where?

The initial plan was to drive around the UK in an anti-clockwise direction, to end up in Cornwall in August for our family camping holiday. I had intended to explore Scotland, Ireland and Wales, do some wild camping, hiking and lots of mountain biking.



4. Before starting this project, did you have any special knowledge of mechanics and woodwork ?

I've always made things and if I don't know how to do something I'll give it a go until it works. I built a small shepherd's hut from scratch with my brother before the van. I did a huge amount of research for all the woodwork, wiring, plumbing etc in the van, and still am doing research!



5. How long did the project take you from start to finish ?

I bought the van in October 2019 and had to strip the entire van out, and as with any camper van it's never truly finished!

William, Thank you very much for taking the time to let our readers know about your inspiring project.

Please forward this edition to your friends, if they would like to receive a regular copy they can email us at mmmeditors@gmail.com Louise Russell & Mick Lovell

Picasso said all women were Goddesses or Doormats.

Whenever I suggest a talk on Picasso I can guarantee at least one person will say "I can't stand Picasso". He seems to be a bit like marmite – you either love him or you hate him. However, Picasso painted (drew, sculpted) in so many very different styles I'm sure I could find something which would appeal to the most sceptical amongst us. Picasso's style changed according to his women. His father took him to brothels from the age of 13, which probably accounted for his insatiable sexual appetite. His first serious relationship



was with an artist's model, *Fernande Olivier*. Fernande had had a very sad early life, including a terrible marriage. He painted around 60 portraits of her. During this period Picasso became fascinated by Iberian and African sculpture and masks and was experimenting with cubism.



Fernande was one of the women in this painting of 1907 (but we don't know which one!). She cheated on him in 1912 and so he found a distraction - *Eva Gouel*. A bit of an enigma, we know very little about her, he painted no portraits of her but she was a great source of inspiration for him. Picasso's cubist painting *Ma Jolie* (Eva's nickname)



was inspired by her. He genuinely loved her and was distraught when she died in 1915 of TB. In 1917 Picasso went to Russia to design costumes and stage sets for a Diaghilev Ballet "Parade" and there he met Russian



ballerina *Olga Khokhlova*. He painted this portrait to mark their engagement and gave it to his mother. They married in 1918 and had a son, Paolo in 1921. She insisted he abandon cubism and when Paolo was born he painted this highly classical, majestic painting of



motherhood. Picasso had many affairs and Olga had a breakdown – she left him and went to the South of France. Leaving Picasso in Paris was probably not a good idea as it was in 1927 when he was 46 and she was 17 he met *Marie-Thérèse Walter*. They kept their affair secret for some years (he was still married to Olga) until finally in 1937 he acknowledged her. Another woman, another style - he began painting in a new erotic style



Together they had a daughter, Maya. Marie-Thérèse was young and obsessed with him; she was totally faithful to him and committed suicide after he died. Then *Dora Maar* came into his life. This was a very intellectually stimulating relationship producing very harsh



paintings – Dora is the 'Weeping Woman' of 1937. compare this to the softness of his painting of Marie Thérèse. Muse no. 6 was *Françoise Gilot*, another very bright lady - she was 21 when they met, he was 61 and together they had two children, a daughter, Paloma and another son called Claude. She was the only one of his women to walk away from him!

Picasso's final love and his second wife was Jacqueline Roque. She was 45 years his junior and he pursued her for months with a red rose every day. They were married for 11 years, until his death, during which time he painted 400



portraits of her. His doctor's advice at this time was plenty of sex and red wine – she committed suicide.

Other than Gilot, he drove his women mad. Dora Maar said of him "As an artist you may be extraordinary but as a man you are worthless!"

Celia O'Shea
July 2020



Comet Neowise ; Chichester 18th July 2020

Eugen Kus



MWHG: Find Wildlife From Home.

We need your help to survey wildlife on the Manhood Peninsula-including Mundham and district! Whether you are in your garden or out on a walk, jot down the wildlife that you see – anything from bumblebees and butterflies, to hedgehogs and herons. It is important to collect records of wildlife so that we can monitor the diversity and abundance of plants and animals in our local area. Your records will help us build an up-to-date database of information that can be shared with local organisations and government bodies. And we can use it to guide our future conservation work.

Download our Wildlife Recording Sheet to start your list of records. You can then enter these records by submitting this document to us. You can also enter single records on an ad hoc basis. All you need for the records are date, location and species, with the option to include photo evidence. We welcome records of all wildlife, not just endangered species. Include plants you see, too!

Just go to our website to start recording:

<http://mwhg.org.uk/get-involved/surveying-the-manhood-peninsula/>

Summer surveys - We are also looking for any wildlife-enthusiasts to help us with socially-distanced wildlife surveys! We have several sites across the Peninsula that need surveying, including a site in North Mundham next to the old relic canal that we recovered last winter, and we are surveying it this summer into autumn, to see what wildlife is now using the canal. If you would be interested in attending a survey session as a one-off or regularly, to get up close to the insects, birds and reptiles on your doorstep, please get in touch by emailing Emily at: esabin@mwhg.org.uk

Editors Note. You can see the latest survey results [here](#)

Below are some photos taken in gardens locally. The names of these creatures are given on **p12**.



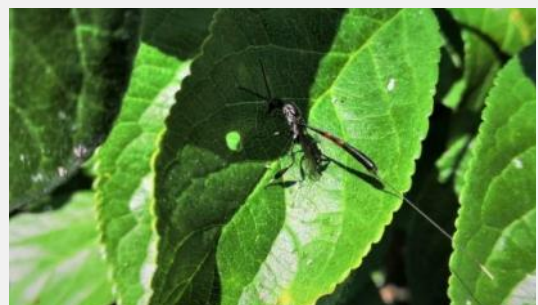
A



C



B



D

VIRGINIA WOOLF – A SUSSEX WRITER

Virginia Woolf was a literary giant of the 20th Century controversial for far more than her writing. Born Adeline Virginia Stephen in Kensington on 25th January 1882, she was the youngest daughter in an upper middle-class Victorian family. At that time daughters from those families were expected to grow into young ladies, take part in the "Season" at 18 and marry well; education and a career were secondary.

Virginia's poor mental health has been a source of much fact and even more fiction. Certainly she was "fragile" from childhood and the rest of her life was punctuated by periods of psychiatric intervention. This, at a time of relatively poor diagnosis, awareness and often unhelpful medical remedies.

Virginia suffered trauma as a child with her mother, Julia, dying in 1895; her elder half-sister, Stella Duckworth, who took over the children's care after their mother's death, in 1897; her father, Leslie, in 1904 and her favourite brother, Thoby, in 1906. Virginia also alluded to childhood sexual abuse by her older half-brothers, Gerald and George Duckworth. These allegations have never been totally substantiated but remained an on-going reality for Virginia.

After Leslie Stephen's death, Vanessa and Virginia left Kensington for Bloomsbury determined to make their own way in the world of art (Vanessa) and writing (Virginia). The Bloomsbury Group originated here as a regular meeting of friends and intellectuals; attracting artists, writers and critics and setting up projects such as the Omega Gallery to promote members' work.

Leonard Woolf, later Virginia's husband, came from a local Jewish family and was a colonial administrator in Ceylon. He had long admired Virginia through his acquaintance with other members of the Bloomsbury Group. By the time she was 30, having resisted various offers of marriage, Virginia accepted Leonard and they married on 10th August 1912 at St. Pancras Registry Office. Marie Woolf, Leonard's mother, was not supportive of the marriage and did not attend.

There has been much speculation about the couple's marital relationship. Due to her fragile mental health, Virginia and Leonard were advised not to have children. It has also been claimed that the marriage was never consummated. Virginia certainly had close relationships with other women, notably Vita Sackville-West, and it is possible she found heterosexual relationships difficult. However, Leonard stood by her as mentor, protector and carer for the rest of their marriage.

To help her poor mental state and the stresses of London life, Virginia was encouraged to spend time in the country and in 1911 she took a year's lease on Little Talland House at Fittlehampton in East Sussex. In 1912, after their marriage, Leonard and Virginia leased 18th Century Asheham House at nearby Beddingham on the Lewes-Seaford road. In 1919, they purchased Monk's House, a weatherboard and brick residence at Rodmell near Lewes, within walking distance of Vanessa's home at Charleston Farmhouse. The Woolfs maintained a London residence, where Leonard ran the Hogarth Press, yet Monk's House was their home. Here Virginia wrote many of her major works beginning with "Jacob's Room" also "To the Lighthouse", "Orlando" and "A Room of One's Own" before finishing with "Between the Acts" in 1941. She had a writing hut in the garden.

Despite her success, writing was stressful for Virginia and a forthcoming publication could make her fearful. Unfavourable critics could often deeply affect Virginia's precarious mental health precipitating a period of mental deterioration.

The advent of World War Two brought the couple fresh fears. They were aware they were on a Nazi Death List especially as Leonard was Jewish. Living near the South Coast in war time also put more strain on Virginia. On 28th March 1941, she left Monk's House for a walk, put stones in her coat pocket and waded into the nearby river Ouse where she drowned. Her body was found three weeks later some miles downstream; the verdict was suicide. Virginia's ashes were interred in the garden at Monk's House. Leonard remained at the house until his death on 14th August 1969. His ashes were interred near Virginia's.

Monk's House is now part of the National Trust and a place of pilgrimage for admirers of Virginia and the Bloomsbury Group amongst others. Its serenity belies the traumas of the prominent English writer who lived there.

Helena Millen



A Room Of Her Own



VIRGINIA, VANESSA AND CHARLESTON FARMHOUSE.

"I am extremely happy walking on the downs [...] I like to have space to spread my mind out in." (Virginia Woolf's diary, September 5 1926)

Virginia had forged a very close bond with her sister Vanessa, the two of them having gone through similar childhood traumas and both having resisted to a large degree the conventional pressures to conform, marry early and be good wives. Both yearned for freedom through creative expression and had built between them a fruitful artistic relationship. Practically, Vanessa created covers for nearly all of Virginia's books, while Virginia sat as a model for some of Vanessa's paintings. They had been pivotal in forming the Bloomsbury Group in 1905, which kept them close geographically and sustained them artistically.

So it is not surprising that Virginia, having married Leonard and having moved to East Sussex for her health, implored Vanessa to come and live closer in the available farmhouse at Charleston near Firle. Saying to Vanessa ***"I wish you'd leave Wissett and take up Charleston"***. At that time, May 1916, Vanessa, though married to Clive Bell, was living in an open relationship with artists Duncan Grant and his friend David Garnett at Wissett Lodge in Suffolk where the men had been working the farm as conscientious objectors.

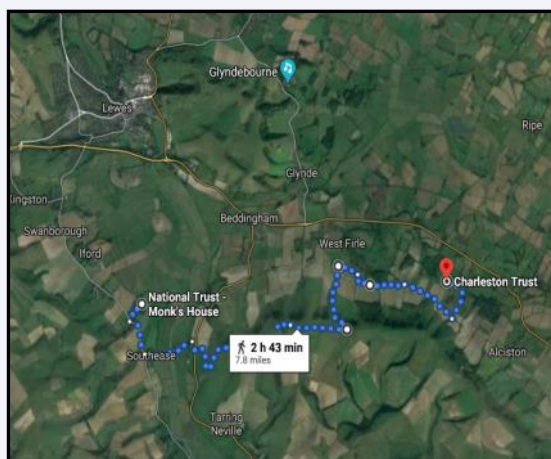
Once Virginia and Leonard had moved to Monks House in 1919 the sisters were able to maintain regular artistic and personal contact and to re-establish the Bloomsbury group in this idyllic pastoral setting, with regular visits from their London circle including E. M. Forster, Lytton Strachey, Aldous Huxley and Maynard Keynes. The group wanted to define a new way of living, free from the constraints of Edwardian society. Any visitor to Charleston will easily appreciate the free-flowing artistic joy with which Vanessa, Duncan Grant, Roger Fry and many others decorated and adorned every room, every fitting and every piece of furniture as well as the wonderful garden and with their many sculptures. A short walk away from the farmhouse is Berwick Church which has splendid mural works painted by Vanessa Bell and Duncan Grant during World War 2.

VISITING.

At the present time due to Covid-19 restrictions, Monks House is closed though it is worth checking with the NT website [here](#) for any changes. Charleston Farmhouse gardens are available to walk round (pre-bookable online [here](#)) though the farmhouse itself unfortunately remains closed. Berwick Church is also closed for restoration/preservation of the Bell/Grant murals -see [here](#) for more information.

A walking map offering three walks of varying lengths around Charleston can be found [here](#).

For a 3.5 mile walk taking in Monk's House, Rodmell, Southease and the River Ouse click [here](#).



Virginia's regular 8 mile walk from
Monks House to Charleston Farmhouse.

Mick



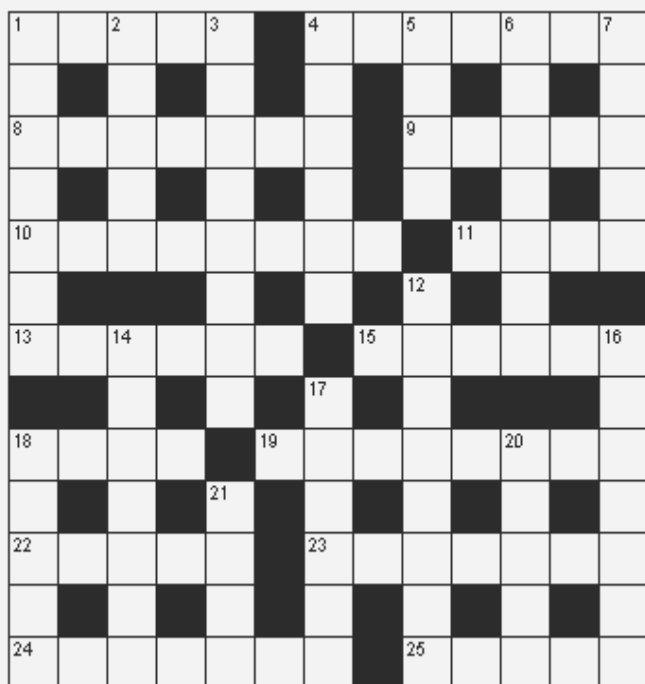
Vanessa Bell



Self Portrait

Crossword.

Standard Crossword- ukp021



© Puzzle Choice

Across

1. Direction (5)
4. Equilibrium (7)
8. Brass instrument (7)
9. Fruit (5)
10. Beamed (8)
11. Singing couple (4)
13. Kind of lake (6)
15. Movie house (6)
18. Large and scholarly book (4)
19. Precise (8)
22. Tooth (5)
23. Inactivity (7)
24. Family name (7)
25. Laconic (5)

Down

1. Notation cancelling a previous flat or sharp (7)
2. A regular route (5)
3. Seven-sided polygon (8)
4. Dairy product (6)
5. Jump (4)
6. Planet (7)
7. Choose by vote (5)
12. Venomous (8)
14. Risk taker (7)
16. Norm (7)
17. In operation (6)
18. Domesticates (5)
20. Theatrical performer (5)
21. Song for solo voice (4)

Quiz.

1. Which country is the third most populated in the world?
2. Which peninsula in Wales became Britain's first AONB in 1956?
3. The Stuart Highway, often referred to simply as "The Track", is a major road in which country?
4. What word can mean a bad actor or an amateur radio operator?
5. Which modern day country was known at the beginning of British colonial rule as Ceylon?
6. What is the American equivalent of the British post code?
7. Who was the last Queen of France?
8. What is the more common name for the highly contagious bacterial disease known as pertussis?
9. What is former footballer Emile Heskey's middle name and also the title of a historical novel by Sir Walter Scott?
10. Bungalow Bill achieved media fame in the late eighties by dating which actress?
11. The Rossetta Stone bears three inscriptions, the top and middle texts are in Ancient Egyptian (using hieroglyphics) and Demotic script, in which language is the bottom text?
12. The name of which fictional fantasist was created in a short story by James Thurber in 1939?
13. Where did Rosa Klebb hide her poisoned weapons?
14. Which range of chalk hills extend across the south-eastern coastal counties of England, from Hampshire in the west to Beachy Head, East Sussex, in the east?
15. Complete the line from Shakespeare's Sonnet 18: " Shall I compare thee to a summer's day, rough winds do shake the"? (Hint: Four words are needed)
16. The Duchess of Sussex and the character played by her in the American legal drama series Suits, both share which same first name?
17. In the United States, a person must be over what age to be eligible to be President or Vice President?
18. Which phrase meaning 'come what may' was used as the title of a book by yachtswoman Clare Francis in 1977?
19. Which European city hosts the highest number of international organizations in the world?
20. Which 1970s pop group took their name from the English agriculturalist who invented the seed drill?
21. Can you name the largest lake in the world that is entirely within one country?
22. The title of which K.J. Alford military march

Recipes.

Parmesan Lollipops.

Louise.

If you want to show off at a party, make these lollipops as canapés, or serve them with almost any soup. They look impressive but are easy to do. **Makes 20**

Ingredients

- 100g Parmesan cheese
- 20 woody rosemary sticks (leaves removed), 8-9cm long

Method

- Preheat the oven to 180°C/gas mark 4. Lightly oil a baking sheet, or place a silicone mat on it.
- Coarsely grate the Parmesan into a bowl. Arrange the rosemary sticks on the prepared baking sheet, spacing them about 8cm apart. Make a little pile of Parmesan (1-2 teaspoons, about 5cm diameter) over one end of each stick.
- Place in the oven and bake for 3-5 minutes, until the cheese is bubbling and golden. Set aside to cool and solidify (about 10 minutes).
- Remove the lollipops with a palette knife and place in little glass vases for serving. You can crunch on them while having an aperitif, or dip them into soup.



Tomato Trickery.— A recipe for EasyPeasy tomatoes.

Dorothy, a reader, gave us the great idea of growing our own tomatoes straight from a fresh tomato seed into the earth. Here are photos of mine and a bowl of the produce which is coming thick and fast.



Louise.

The Way it Is by Lynn Ungar

One morning you might wake up to realize that the knot in your stomach had loosened itself and slipped away, and that the pit of unfulfilled longing in your heart had gradually, and without your really noticing, been filled in—patched like a pothole, not quite the same as it was, but good enough.

And in that moment it might occur to you that your life, though not the way you planned it, and maybe not even entirely the way you wanted it, is nonetheless—persistently, abundantly, miraculously—exactly the way it is.



When Did They Say The Barbers Would Open?



Parish Council Announcement.



North Mundham Parish Council
www.northmundham.org
email: clerk@northmundham.org
Tel: 01243 203050
1 Charlmead East Wittering Chichester West Sussex
PO20 8DN



HOUSING DEVELOPMENT IN NORTH MUNDHAM AND RUNCTON

Over the next few weeks and months there will be a significant number of planning applications submitted to Chichester District Council (CDC) for new housing in North Mundham and Runcton. This is a direct consequence of CDC not having a Local Plan in place which in turn means planning applications now have a presumption in favour of development unless local conditions dictate otherwise. The Parish Council will be notified of all applications and will have an opportunity to assess the sites against current need and appropriateness for the parish. The Parish Council can raise an objection. However, the final decision will be made by CDC planning officers and its own planning committee.

WHAT YOU CAN DO TO HELP.

The best way to influence these decisions is by responding directly to CDC at their website:

<https://www.chichester.gov.uk/viewplanningapplications>.

Two applications have already been submitted:

NM/20/01465/FUL Land East of The Spinney, B2166 Runcton, west of The Walnut Tree roundabout- Erection of 9 dwellings

NM/20/01686/FUL Lowlands, B2166 North Mundham, west of 1760 Cottage - Erection of 41 dwellings

You can also attend the Parish Council Planning Committee meetings, the dates of which are published on this website <https://northmundham.org/> and on p2 herein.

You can contact your **local CDC Councillors**
Christopher Page cpage@chichester.gov.uk

Simon Oakley soakley@chichester.gov.uk

and your **County Councillor** Jamie Fitzjohn jamie.fitzjohn@westsussex.gov.uk

You will need to monitor the CDC website and the Parish Council website and local press on a regular basis to make sure you don't miss any meetings or deadlines for submitting comments. We will endeavour to put up posters around the Parish as we hear about applications being submitted.

Thank you for your support.

NORTH MUNDHAM PARISH COUNCIL & THE NEIGHBOURHOOD PLAN STEERING GROUP

Please forward this edition to your friends, if they would like to receive a regular copy they can email us at mmmeditors@gmail.com Louise Russell & Mick Lovell



NORTH MUNDHAM PARISH COUNCIL

Working for the whole community

SCHEDULE OF MEETINGS TO BE HELD BY NORTH MUNDHAM PARISH COUNCIL	
Tue 18th Aug, 2020	Extra Ordinary Planning Meeting
Planning Meeting & Full Council	1 st September 2020
Planning Meeting	6 th October 2020
Planning Meeting & Full Council	3 rd November 2020
Planning Meeting	1 st December 2020
<p>Extra Ordinary Planning Meeting: Tue. 18th August. To consider the planning application for the Lowlands site - 20/01686/FUL Erection of 41 no. dwellings and associated development, including landscaping, highways and parking. Lowlands B2166 Pagham Road Roundabout To Island Cottage North Mundham PO20 1EP . The validated direct link to the CDC website is :- https://publicaccess.chichester.gov.uk/online-applications/applicationDetails.do?keyVal=QD3T63ERL9H00&activeTab=summary Any other planning applications published before the date of the meeting will also be discussed. The agenda will be published in the first week of August.</p> <p>Next Parish Council Meeting. This Parish Council Meeting will be held on Tuesday 1st September, 2020 at 7.30pm Meeting will be held in the small hall at North Mundham Village Centre. Members of the public are welcome to attend.</p> <p>NB The Chairman has the right to call a Council (3) or Parish Meeting (4) at any time during the year should any matters come before the Council that they feel this is necessary the Parishioners will be advised. Local Government Act 1972 sch 9(1) Local Government Act 1972 sch 12 para 8 Local Government Act 1972 sch 12 para 9(1) and 25(1) Local Government Act 1972 sch 15(1)(a) and 30(1)9a</p> <p>Planning Committee Meetings will commence at 19.00 at North Mundham Village Hall unless advertised to the contrary. Full Council will commence at 19.30 or immediately after the Planning Committee Meeting.</p>	

NORTH MUNDHAM PARISH COUNCIL CONTACT LIST			
Mrs Louise Chater Clerk to the Parish Council	01243 203050	clerk@northmundham.org	1 Charlmead, East Wittering Chichester. West Sussex PO20 8DN
Vacancy			
Mr Tim Russell	01243 781052	t.russell@northmundham.org	
Mrs Frances Neave	01243 782391	f.neave@northmundham.org	
Mr Paul Chivers	01243 789990	p.chivers@northmundham.org	
Mr Robert Callaway-Lewis	07880713159	r.callaway-lewis@northmundham.org	
Mr Peter Stephens	07747468699	p.stephens@northmundham.org	
Mr Hugo Wall	01243 278542	h.wall@northmundham.org	
Mrs Annie Maclean	01243 265804	a.maclean@northmundham.org	
Mr Keith Phillips	07980668612	k.phillips@northmundham.org	
Chris Page District Councillor	01243 380009	cpage@chichester.gov.uk	6 Willowmead Close Runcton PO20 1NH
Simon Oakley District Councillor	01243 785166	soakley@chichester.gov.uk	12 Netteton Avenue Tangmere PO20 2HZ
Jamie Fitzjohn West Sussex County Councillor	01243 782380	Jamie.fitzjohn@westsussex.gov.uk	77 Fishbourne Road Fishbourne PO19 3JJ

Please forward this edition to your friends, if they would like to receive a regular copy they can email us at mmmeditors@gmail.com Louise Russell & Mick Lovell

Quiz Answers from p8.

1. USA
2. Gower Peninsula
(AONB: Area of Outstanding Natural Beauty)
3. Australia
4. Ham
5. Sri Lanka
6. ZIP code (which stands for Zone Improvement Plan)
7. Marie Antoinette
8. Whooping cough
9. Ivanhoe
10. Joan Collins
11. Greek (Ancient Greek)
12. Walter Mitty
13. In her shoes (a fictional character in the film
From Russia With Love that has poison-tipped shoes)
14. The South Downs
15. "darling buds of May"
16. Rachel
(Rachel Meghan Markle and the character is Rachel Zane)
17. 35 years of age
18. Come hell or high water
19. Geneva (Switzerland)
20. Jethro Tull
21. Lake Michigan
22. Colonel Bogey

Crossword Solution from p8.

Solution - ukp021

N	O	R	T	H		B	A	L	A	N	C	E
A		O		E		U		E		E		L
T	R	U	M	P	E	T		A	P	P	L	E
U		N		T		T		P		T		C
R	A	D	I	A	T	E	D		D	U	E	T
A					G		R		V		N	
L	A	G	O	O	N		C	I	N	E	M	A
		A		N		A		R				V
T	O	M	E			A	C	C	U	R	A	T
A		B		A			T		L		C	
M	O	L	A	R			I	N	E	R	T	I
E		E		I			V		N		O	
S	U	R	N	A	M	E			T	E	R	S

© Puzzle Choice

P6 Garden Wildlife: A: Slow-worm. B: Common Darter dragonfly. C: Small White Butterfly (on my cabbage!– Mick). D: Ichneumon wasp.

Attribution.

Cartoons are freely available on social media and are unattributed.
Except as stated below the photos are the property of the authors/editors.

P6&7 All images below are from Wikimedia Commons.

V. Woolf. George Charles Beresford / Public domain

Writers Lodge; Monks House. Daderot / CC0

V. Woolf painting Roger Fry / Public domain

V. Bell George Charles Beresford / Public domain

V. Bell Self Portrait, Public Domain.

P8 Quiz and answers Copyright –Free Pub Quiz. www.freepubquiz.co.uk

This magazine has been put together to put people in touch with one another in the village, to encourage the swapping of plants, recipes, books, Exchange & Mart, hints, ideas and things to do.

'Letters to the Editor' would be very welcome. We seek to encourage people's input to the magazine.

Help us fill the following issues and make your voice part of our local life.

Editor's Notes for Published Material

If you wish to advertise an event which takes place during the first two weeks of the month, it needs to be in the previous month's magazine. If it goes in the magazine of the month it will take place, it won't reach all the readers in time. We want to advertise your events very much so please make sure we can. Thank you.

COPY: 400-600 words as a target please, short articles very welcome: Small is beautiful!

Copy should be emailed to editors by 25th of the month to allow for distribution by the first week of the following month.

Any font acceptable, Tahoma 11 pt. preferred. We alter it to fit the available space.

NB Letters can be longer. -See Disclaimer.

NB2 All provided images should be royalty free since all images in the magazine are published as royalty-free.

DISCLAIMER

The views expressed in the Mundham Monthly are not necessarily those of the editorial team. The Editor reserves the right to edit and rearrange articles, but will endeavour to do so only where space is limited or where the information will be enhanced. All information is published in good faith but we take no responsibility for errors or omissions. We are happy to publish letters as 'name and address supplied' but will not include anything sent anonymously that is clearly defamatory or hurtful to a specific individual.

The Editorial Team

Please forward this edition to your friends, if they would like to receive a regular copy they can email us at mmmeditors@gmail.com Louise Russell & Mick Lovell