

Surface Water Management Plans in West Sussex

Newsletter – April 2015



Florence Pond, Sidlesham

About the SWMPs...

West Sussex County Council has appointed CH2M HILL to develop Surface Water Management Plans (SWMPs) in five locations. These are:

- Lavant Valley
- Easebourne
- Lancing
- Manhood Peninsula
- Chichester

This SWMP newsletter provides an update on the work that has been carried out in the last two months on the Easebourne, Lavant Valley, Lancing, Manhood Peninsula and Chichester studies.

If you missed the previous newsletters, you can request past copies by emailing;

OperationWatershed@westsussex.gov.uk

Easebourne

The final report for the Easebourne study has been produced which sets out a series of possible options to reduce flood risk to people, property and infrastructure in Easebourne

The report will be available on WSCC's website at;

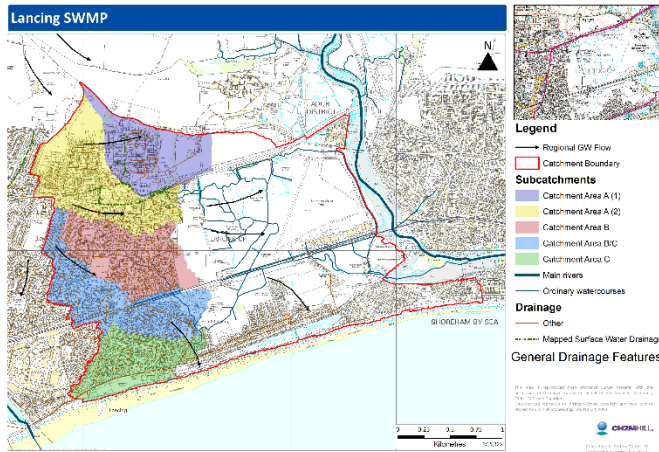
[Flood Reports, Projects & Policies](#)

Lavant Valley

The Lavant Study started in April 2014, and a final report has been produced. The report identifies a series of measures to reduce flood risk through capital works or improved maintenance, and clarifies emergency responses within key villages in response to high groundwater and river levels in the Upper Lavant Valley.

The report is now available on WSCC's website at the link above.

Lancing



General Drainage Plan for Lancing

Since the last newsletter in January 2015 we have:

- completed our evaluation of all the evidence base, to identify the causes and impacts of flooding in the catchment.
- undertaken hydraulic modelling of the Lancing Brooks to identify pinch points and maintenance requirements for the ditch network, and;
- identified flood alleviation options across the study area, focussing on hotspots of flooding in North Lancing and West Beach Estate;

We are in the process of completing our draft report. The draft report will be issued to West Sussex County Council in April 2015.

Manhood Peninsula

This project is programmed to run from July 2014 to February 2015. We have now produced a draft report, which is being reviewed by WSCC. The draft report identifies capital and maintenance improvements which are required in the most vulnerable settlements in the Manhood Peninsula.

The draft report also identifies the measures that need to be taken over the long-term to manage flood risk across the Manhood Peninsula.

Chichester

The Chichester study commenced in November 2014 and to date we have:

- Reviewed a wide range of previous studies, reports and data, including borehole and rainfall data;
- Undertaken a review of the catchment area and identified pinch points within this;
- met representatives from the Fishbourne and Parklands Flood Prevention & Action Group;
- Undertaken site visits in February and March 2015 to evaluate the drainage network;
- Commissioned and completed a comprehensive manhole survey of the study area, to establish connectivity and conditions of the drainage network, and;
- Commenced our evaluation of the capacity of the drainage system, and hence potential improvement works which may be required.



Hook Dyke, Chichester

Our next steps are to review the findings of the manhole survey, and complete our analysis of the capacity of the drainage system. We will also review information from Network Rail about culverts under the railway, and evaluate historic mapping to identify how the study area drained pre-development. We will subsequently identify and evaluate potential improvement works to reduce flood risk. Our draft report will be available to West Sussex County Council at the end of May 2015.

Contact us...

For further information, please contact Peter Smith (peter.smith@westsussex.gov.uk) at West Sussex County Council.