



# NORTH MUNDHAM PARISH COUNCIL

## Working for the whole community



Newsletter Summer 2013

We are looking for new Parish Councillors —could it be you?



**LOCAL ISSUES NEED LOCAL PEOPLE TO SPEAK UP FOR THEM**

**YOU could help keep North Mundham a vibrant, good place to live by becoming a Parish Councillor.**

**YOU could be in at the 'grass roots' level of Local Government and be involved in making things happen or getting things sorted!**

**YOU could reflect local issues with your attention to the parish environment .**

**You only need to be able to give up one evening a month to attend Parish Council meetings, and in return you will receive the satisfaction of knowing that you are helping your local community.**

**Candidates must be at least 18 years of age and a British subject or a citizen of the Commonwealth or European Union and must satisfy at least **one** of the following:**

- be a local government elector for the Parish of North Mundham;
- have, during the whole of the previous 12 months, occupied land or other property in the parish, either as owner or tenant
- have, during the whole of the previous 12 months, had your principal or only place of work in the parish;
- have resided in the parish during the whole of the previous 12 months

The Parish Council normally meets on the first Tuesday of the month at 7.00pm. New Councillors will hold office until the next local elections.

**Any person interested in becoming a Parish Councillor should contact the Clerk, Louise Chater, by phone 01243 203050 or e-mail [clerk@northmundham.org](mailto:clerk@northmundham.org) for more information. The Parish Council hopes to fill the post at its meeting on 1st October 2013.**

**See [www.northmundham.org](http://www.northmundham.org) for information about current Parish issues**

## Chairman's Report

Reviewing the Parish Council Year May 2012 to May 2013 highlights the balance of local and country wide intrusions evident in our villages. There have been several small local changes with domestic planning applications for housing extensions or refurbishments, some changes of usage such as the request by the Free School, with two applications for solar panel installations, but the major change will be the development of the site for affordable housing on the area just of the B2166. With the endorsement of the public in June 2010 and considerable examination by the working party the site with plans for 15 dwellings is under the scrutiny of Chichester District Council, though, could be built by the end of the year. This exception site reflects the wider demand for rentable homes though here, we have been assured are homes for those on the housing list with a demonstrable local connections. Under the proposals

Continued from page 1

in the Local Plan , at this time still under a consultation period, up to 25 more houses may be imposed on the parish by 2016 reflecting country-wide demands, rather than perceived local needs.

What will you find inside?	• Police & Crime Plan
	• Hemlock
	• Water
• New Homes	• Dropwort
• Bonus	• North
• The Local Plan	• Mundham
• Living on the Edge	• Youth Club
• Simon Oakley	• Free School
• Affordable Housing	• Parish
• Potholes & Damaged Roads	• Polishers
• Vehicle Crime	• Village Shop
• Wild about Plant	• Flooding in Parish
	• Pavilion
	• Annexe
	• Accounts

Other major applications have been for glass houses and supporting packing sheds on the Horticultural Development Area (H.D.A.), Hall Hunter with its extensive strawberry growing area and Hills extension with a reservoir reflect the wider demands in global competition. Maintaining sound liaison with these big enterprises as with the recycling plant also near to the H.D.A. gives a measure of watchfulness on the environment.

Flooding in June and later in January when the Rife overflowed at Runcton and water was unable to get away in South Mundham exposed the different agencies and their level of responsibility but the Environment Agency has promised to desilt the river so water can flow freely to the sea while riparian owners have been advised to maintain their ditches.

The nine councillors who regularly meet on the first Tuesday of the month (except August) continue to serve on outside bodies such as The Manhood Peninsula Forum, Pagham Harbour Reserve, Neighbourhood Panel, Rights of Way and Chichester Local Committee, thus attempting to hold a wider picture of changes imposed from outside their remit.

Listed below are some of the actions taken during May 2012—May 2013 where the parish council has been able to use its own initiative to protect and enhance this environment.

- Bus shelter repairs
- Parish Polishers
- Flood Alleviation
- Open Gardens
- Donation to Playing Field Trust
- Support Village Hall
- Donation to Youth Club
- Police Liaison
- Monitoring Recycling Plant
- Financial Responsibility for the War Memorial
- Inspection of Footpaths
- Continued request for safe crossing at the Walnut Tree (safe route to school)

Denia Turnbull (Chairman)  
d.turnbull@northmundham.org

## Open Gardens 23 June 2013

The weather held (just about) for the open garden event which has raised a fantastic £601.96 towards the new kitchen fund for the village hall.

Thank you to all those residents who kindly opened their gardens. If you would be interested in volunteering to open your garden next year then please contact Denia on 01243 788640 or d.turnbull@northmundham.org

### New Homes Bonus:

The New Homes Bonus is available to communities that have accepted new housing. The District Council has recently made available the first years fund and North Mundham Parish Council is permitted to apply for this funding, there is approximately £3000 available if the application is successful. The fund is available to address an existing problem (perhaps exacerbated by new developments).

What facilities would you like the parish council improve/provide? Perhaps the kitchen facilities at the Village Hall, the play equipment..... We would be very grateful if you would take the time to answer a few questions which you can access directly via the QR code or via <http://northmundham.org/?p=1994> or if you would like a paper copy please do not hesitate to contact the Clerk on 01243 203050.

The bid for this funding has to be submitted by 1st October so please don't delay.



### The Local Plan

On 3 June 2013 Chichester District Council's Cabinet approved a revised Local Development Scheme which is located on the Local Development Scheme page (<http://www.chichester.gov.uk/index.cfm?articleid=5088>).

The Cabinet also confirmed an updated timetable for the preparation of the Local Plan:

*Autumn 2013:* You will have the opportunity to look at the revised Local Plan before it goes to the Secretary of State. You will be asked if it meets the Government guidelines.

*Spring 2014:* The District Council will be submitting the Local Plan to the Secretary of State.

*Autumn 2014:* This is when the District Council expect the Local Plan to be adopted.

## LIVING ON THE EDGE

Did you know if a watercourse runs alongside your garden wall or hedge you should check your property deeds to see if the wall or hedge marks your boundary. If the watercourse marks the boundary, it is assumed you own the land up to the centre of the watercourse.

The Environment Agency produces a very good leaflet called Living on the Edge which gives you lots of useful advice available to download at <http://www.environment-agency.gov.uk/homeandleisure/floods/31626.aspx> or contact the Clerk who will provide you with a copy. Furthermore, Chichester District Council's website (<http://www.chichester.gov.uk/index.cfm?articleid=14423>) provides lots of useful information on land drainage.

We have enclosed with this newsletter a flood survey form (you are welcome to photocopy this or download additional copies from [www.northmundham.org](http://www.northmundham.org)). We would ask that if you experience any flooding problems you complete the form and return it to the parish council by 31 March 2014, 1 Charlmead, East Wittering, PO20 8DN. By returning this form we are able to gather evidence of the severity and frequency of the problems experience. With this evidence we can continue to put pressure on the relevant bodies to address the issues in the Parish.



**Simon Oakley** was elected as County Councillor for Chichester East (which includes the Parish of North Mundham) on Thursday 2nd May 2013.

Born in St Richards Hospital Simon grew up in the Witterings, attending East Wittering Primary School then Bishop Luffa. He served as a Merchant Naval Deck Officer, first working for the Ministry of Defence, then P & O Ferries operating out of Portsmouth. Later he moved to Tangmere in 1986 when the old airfield complex started to be redeveloped. Having now left the sea, he is involved in residential property letting, and is currently Tangmere Cricket Club's Chairman/Groundsman, an occasional left arm bowler and a member of the Sussex Cricket League's Umpires Panel.

Simon is also involved in the management of Tangmere Village Centre, a Tangmere Parish Councillor and is also a District Councillor for Tangmere.

At the County Council he serves you on the Environmental and Community Services Select Committee, Planning Committee and South Chichester County Local Committee.

## AFFORDABLE HOUSING IN THE PARISH

**As those of you who attending the Annual Meeting of Parish Electors on 23rd May will know, the Hyde Group hope to commence work on the affordable housing in the Autumn.**

**The Parish Council continues to investigate to provision of a footpath to integrate the site into the village and provide access to the pedestrian crossing.**

---

### Wheezy? Breathless? You are not alone.

Come along to your local Breathe Easy group for support and information about living with a lung condition and breathlessness. You will be met with a warm welcome and a friendly, understanding group.

Breathe Easy Chichester launched in July 2008 and have been meeting on a monthly basis. The group have recently had talks from a local bee keeper, and a visitor from the British Lung Foundation and each meeting is rounded off with an update from Committee members, a raffle and a cup of tea and social time. The group have fantastic support from the local respiratory team and receive regular visits allowing group members to ask questions. Breathe Easy meet at Joys Croft Court Sheltered Accommodation, St Pancras Road, Chichester, PO19 7LS on the 2<sup>nd</sup> Tuesday of the month from 2pm to 4pm. The group would be delighted to welcome new members and look forward to introducing you to the other members.

For more information please contact Joanne on 0207 688 5575. Meetings are free to attend and family, friends and carers are welcome. Breathe Easy is a part of the British Lung Foundation. Reg Charity No: 326730

### Potholes and damaged roads

Report any potholes or damaged road surfaces to the Highways Department at West Sussex County Council by Phone 01243 777100 or via [love.westsussex.gov.uk](http://love.westsussex.gov.uk)



There is also an app for your smart phone called Love West Sussex where you can send a photo of the problem and report it. You will then be updated as to when the problem will be fixed. Because there are so many potholes and road safety issues at the moment, the response to your report can take a while, but serious problems are usually dealt with fairly quickly.



**Sussex Police**  
Serving Sussex

[www.sussex.police.uk](http://www.sussex.police.uk)

## Vehicle Crime

Sussex Police continue to receive reports of vehicle crime across the District whereby vehicles are being entered and items stolen from within. Vehicles are being left unattended and insecure allowing thieves to quickly enter without being noticed. Others are being locked and secured but with valuable items left on show, making them a target for thieves operating in the area.

Please ensure that you remove all valuables from your vehicles, keep them out of sight and help protect your own property.

Vehicle related crime remains a key concern and there are several simple precautions that you can take when leaving your vehicle unattended which will help you reduce the risk of becoming a victim of car crime.

Secure your vehicle, by locking all doors and closing windows (including sunroof) every time you leave your car, even if the vehicle is parked outside your house.

Remove everything from the vehicle; ensure that all valuables are removed. Make sure you don't leave anything on display such as a handbag or coat. Car criminals window shop – take away the temptation. Remember, please be vigilant and if you see any suspicious activity in these areas then please contact Sussex Police on 101.



Wild plant charity Plantlife ([www.plantlife.org.uk](http://www.plantlife.org.uk)), are hoping to reach out to many wild plant enthusiasts and nature lovers by inviting them to become wild plant 'pioneers' and subscribe to a free quarterly e-learning bulletin to learn more about our native wild plants via the 'Wild About Plants' project website - [www.wildaboutplants.org.uk](http://www.wildaboutplants.org.uk).

The Wild About Plants project aims to help people reconnect with the outdoors and their local greenspaces. Working with schools, families and communities from all walks of life and with

fantastic free downloadable resources, the team hope to engage people with the nature on their doorstep.

In recent years subscribers have been asked to record the plant life in their local area and recount what they used to see/pick and forage for.

Wild About Plants is funded by Natural England through Access to Nature, as part of the Big Lottery Fund's Changing Spaces programme. It is a partnership project involving partner organisations throughout the country."



## Sussex PCC launches Police & Crime Plan

Hello,

In April I launched my first ever Police & Crime Plan, 'Safer in Sussex', setting out my strategic objectives for tackling crime in the county.

During my election campaign and since taking office, I have met members of the public from all over Sussex who have told me what matters to them. I have listened carefully to this feedback and those priorities have helped shape my Police & Crime Plan.

The Plan lays out how, in partnership, I will tackle four key priority areas for Sussex during my term of office and the targets that I will expect Sussex Police and our Criminal Justice partners across the county to achieve:

- Crime & Community Safety – Reducing the risk of crime per 1000 population.
- Victim Focus – Improving victim satisfaction in the overall experience of the criminal justice system.
- Public Confidence – Building trust and increasing the reporting of domestic violence and abuse, serious sexual offences, anti-social behaviour and hate crimes.
- Value for Money – Working with Sussex Police and partners to meet the financial challenges ahead and identifying opportunities to improve.

Sussex Police has prepared an Operational Delivery Plan (ODP), which sets out how it will deliver operational policing against the priorities, targets and budget I have set within my Police & Crime Plan.

The full Police & Crime Plan can be found online at <http://www.sussex-pcc.gov.uk/police-crime-plan/>. Printed copies will also be available to read in your local library.

Your feedback is important to me. Please keep in touch via email, [spcc@sussex-pcc.gov.uk](mailto:spcc@sussex-pcc.gov.uk), Twitter, @SussexPCC or Facebook, [www.facebook.com/SussexPCC](http://www.facebook.com/SussexPCC). Please also visit [www.sussex-pcc.gov.uk](http://www.sussex-pcc.gov.uk) and sign up to receive my email newsletter to keep updated on my latest news, meetings and events.

Best wishes



Katy Bourne

Sussex Police and Crime Commissioner





## HEMLOCK WATER DROPWORT

This plant is on the increase in the area please take the time to inspect your gardens and watercourses.

It is the most toxic plant in Britain to both humans and animals. The leaves smell of celery or parsley. The roots are most toxic part of the plant. The roots are pale yellow and composed of 5 or more fleshy tubers (hence the name Dead Man's Fingers) and exude a yellowish liquid when cut that stains the skin. Root are exposed by ditching operations, or by scouring of flood water overwinter, where they become accessible to live stock .

It is perennial with tuberous roots and the leaves that remain green during winter. The leaves are somewhat celery-like in form. The lower leaves are large and spreading reaching more than 30cms in length, and are broadly triangular. The upper leaves are much smaller, nearly stalkless, the segments narrower and acute. The small, white or pale pink flowers, which are 5 to 10cm in diameter and made up of 15 to 30 rayed compound umbels appear in June and July. It grows in shallow water in streams, on the banks of rivers, lakes, ponds, canals, marshes, wet woodland and in crevices in water-side masonry.

### Toxicity

It is most toxic in the late winter and early spring. It is a convulsant poison that is not affected by drying or storage , therefore remains toxic after cutting and chemical controls. Very small amounts are sufficient to cause death. Poisoning of farm stock usually occurs without any warning. Horses and cattle symptoms include salivation, dilated pupils, respiratory distress and spasmodic convulsions. Animals that do not die may develop diarrhoea for two days, then slowly return to normal. Humans have been poisoned when leaves have been mistaken for those of celery, or the tuberous roots for parsnip symptoms include vomiting, dilated pupils, respiratory distress and spasmodic convulsions.

### Control

It can be dug out dried and burnt. It remains toxic after digging so livestock should be excluded from the area. Protective clothing should be worn and care should be taken by handling the plant. It can be controlled by herbicides containing glyphosate or 2,4-Damine, bet applied in May or June.

## North Mundham Youth Club

The youth club is a very important facility for the young residents of the parish to help them maintain their friendships made in primary school as they separate and go to the different high schools in the area. The Club provides a variety of activities, including cooking, art and craft, table tennis, pool and football etc.

Unfortunately, due to the loss of the youth leader the youth club has temporarily been suspended.

However, the Committee has every intention of reopening the youth club in September. The Youth Leaders post is being advertised shortly. The committee is looking to volunteers to join the committee and/or to help on Thursday evenings 7-9pm during term time, at the village hall. If you would like to volunteer or to find out more information please call 07773 67596

## Free School Planning Application

As you are probably aware the Parish Council has objected to this application, mainly on infrastructure issues.

The application is expected to go before the District Council Planning Committee on 24th July 2013.

### Chichester District Council Planning Committee

If you wish to register to speak you must contact Chichester District Council no later than 5pm the day before the meeting, however, there is a limit for each application of a maximum of three objectors and three supporters.

For further information on speaking at the District Council planning committee meeting please see <http://www.chichester.gov.uk/index.cfm?articleid=5833>

## Parish Polishers

A group of residents have volunteered to join the Parish Polishers, members of the group decide what activities they would like to carry out to improve our surroundings and the Parish Council in conjunction with County Council support their work.

So far members of the group have washed the directional signs, street names signs and reflective posts. Picked litter in various locations, including helping the Playing Field Trust after the travellers visit. Cleared the overgrowth on the triangle at the junction of Saltham Lane, Mill Lane and Runcton Lane. And surveyed and strimmed round the trees in the closed lay-by on the B2166 with a view to carrying out clearance work.

If you are interested in joining the group then please contact the Clerk.

## Summertime...and the recycling is easy!

All your glass bottles and jars, plastic bottles, cans, paper and card go to the Materials Recycling Facility (MRF) in Ford where they are sorted and then sent on to manufacturers who turn them into something new.

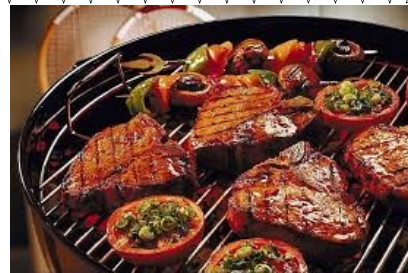
We are asking residents to be careful that when they recycle after their party they are not recycling the wrong things as this could lead to some of their hard work literally going to waste – please make sure all items are not wet, dirty or tied up in plastic bags.

### Let's get this party started!

- Place a container next to the barbecue for people to pop their empty drink cans and bottles in
- Consider using washable plates and cutlery rather than plastic knives and forks and paper plates
- If you are using packets of burgers and sausages, remember the card outer can be recycled, but the plastic inners cannot!

### The party's over...

- Make sure drink cans and wine bottles are totally empty and put them LOOSE in the recycling bin
- Don't recycle paper plates which have leftovers on them
- You can't recycle plastic knives and forks
- Ensure everything is DRY
- Tip the cans and bottles straight into the recycling bin



## Village Shop

The Parish Council has been contacted by a resident expressing a wish for a community shop be opened in the Parish. The Parish Council can not run a commercial business, however, it can help with setting up and supporting the community group that runs the shop. If you would be interested in progressing this project please write to the Clerk at 1 Charlmead, East Wittering, PO20 8DN or email [clerk@nortmundham.org](mailto:clerk@nortmundham.org)

### CALENDAR OF COUNCIL MEETINGS

3rd September 2013

1st October 2013

5th November 2013

3rd December 2013

7th January 2014

All meetings will commence at 7.15pm at North Mundham Village Hall unless advertised to the contrary. Planning application papers are available for inspection in the Village Hall from 7pm.

The first ten minutes of the meeting is available to the public to make representations to the Parish Council—Please come and make the Parish Council aware of your concerns or appreciation!

### Flooding in parish

Following the flooding in June and December 2012, the Parish Council continues to work with other authorities to resolve the issues in the parish that affect the residents.



The Environment Agency are shortly due to commence survey work on the Pagham Rife to ascertain the level of silt in the rife following the completion of the survey they will carryout any necessary work.

The Parish Council continues to put pressure on the County Council to address the issues of the culverts in South Mundham.

Southern Water have recently installed a pump and sealed manhole covers in the Saltham Lane area to address the issues experienced in this area.

By completing the flood survey, this will help the Parish Council by providing a strong evidence base when dealing with the various agency to address area of concern.

### Pavilion Annexe

The Parish Council would like to congratulate the Playing Field Trust and all the residents of the parish who have made the building of the annexe possible. The decision of the Parish Council to provide a grant of £50,000 which enabled the Trust to commence the mammoth task raising funds, was endorsed by the support received at the Annual Parish Meeting. This grant has now been paid in full to the Playing Field Trust.

The building looks fantastic and will be available for bookings shortly. Booking will be taken by Terry Reed on 01243 264028

### County Councillor

Simon Oakley  
[simon.okley@westsussex.gov.uk](mailto:simon.okley@westsussex.gov.uk)  
01243 538394

### District Councillor

Paul Jarvis  
[Paul2.jarvis@btopenworld.com](mailto:Paul2.jarvis@btopenworld.com)  
532066

### Police Non Emergency Number

**101**

### Medical Non Emergency Number

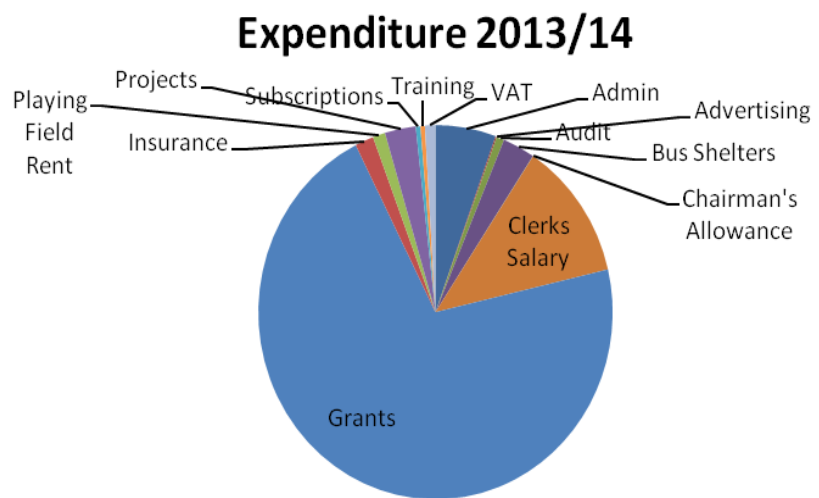
**111**

## ACCOUNTS FOR YEAR ENDED 31 MARCH 2013

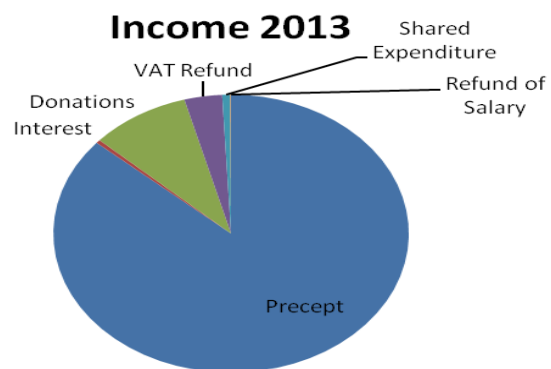
The Parish Council accounts have been open for inspection and are currently with the Auditor. The date for audit by Littlejohn LLP was set for 10th June 2013. The submitted accounts have been advertised on the notice boards and the parish council website.

If you have any questions on the accounts you are entitled to contact the auditor from the 10th June until the completion of the audit. The audited accounts will be advertised in due course.

Admin	4238.81
Advertising	96.60
Audit	535.00
Bus Shelters	2264.50
Chairman's Allowance	14.54
Clerks Salary	9298.61
Grants	54997.45
Insurance	1301.97
Playing Field Rent	875.00
Projects	2167.35
Subscriptions	329.06
Training	312.00
VAT	733.83
<b>Total Expenditure</b>	<b>77164.72</b>



Precept	30000.00
Interest	137.43
Donations	3136.38
VAT Refund	1194.03
Shared Expenditure	251.50
Refund of Salary	25.75
<b>Total Income</b>	<b>34745.09</b>



### YOUR COUNCILLORS....

Denia Turnbull—Chairman  
d.turnbull@northmundham.org  
788640

Tim Russell—Vice Chairman  
t.russell@northmundham.org  
781052

Richard Beeny  
rbeeny@runcion.eclipse.co.uk  
789998

Rob Callaway-Lewis  
robertthetent@hotmail.com  
07880713159

Paul Chivers  
paul.chivers@virgin.net  
789990

Annie Maclean  
a.maclean@northmundham.org  
262569

Frances Neave  
f.neave@northmundham.org  
782391

Jon Stuart  
jon.stuart@j5consulting.biz  
775298

VACANCY